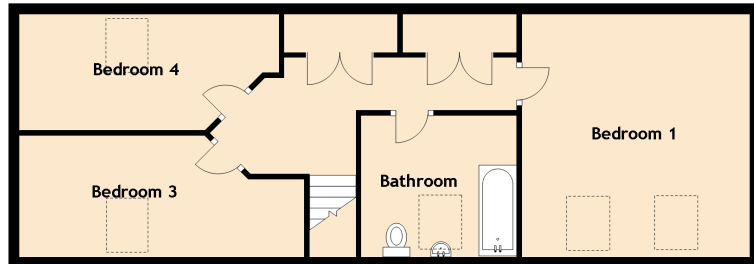
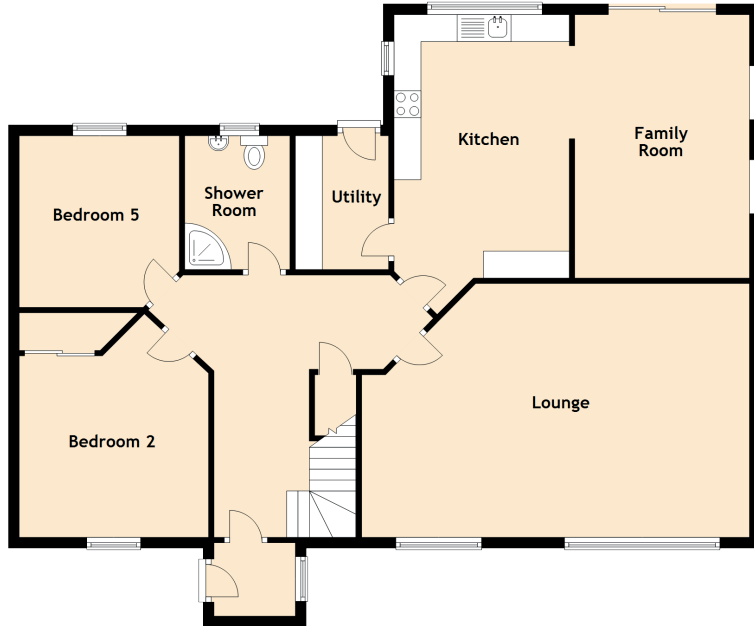


Balmacron Lodge

MEIGLE, BLAIRGOWRIE, PERTSHIRE, PH12 8TD



Approximate Dimensions (Taken from the widest point)

Ground Floor

Lounge	7.19m (23'7") x 4.70m (15'5")
Kitchen	4.88m (16') x 3.25m (10'8")
Utility	2.48m (8'2") x 1.73m (5'8")
Family Room	4.88m (16') x 3.24m (10'8")
Bedroom 2	3.51m (11'6") x 3.01m (9'11")
Bedroom 5	3.18m (10'5") x 2.97m (9'9")
Shower Room	2.48m (8'2") x 1.95m (6'5")

First Floor

Bedroom 1	4.49m (14'9") x 4.17m (13'8")
Bedroom 3	5.23m (17'2") x 2.24m (7'4")
Bedroom 4	4.81m (15'9") x 2.15m (7')
Bathroom	2.88m (9'5") x 2.61m (8'7")