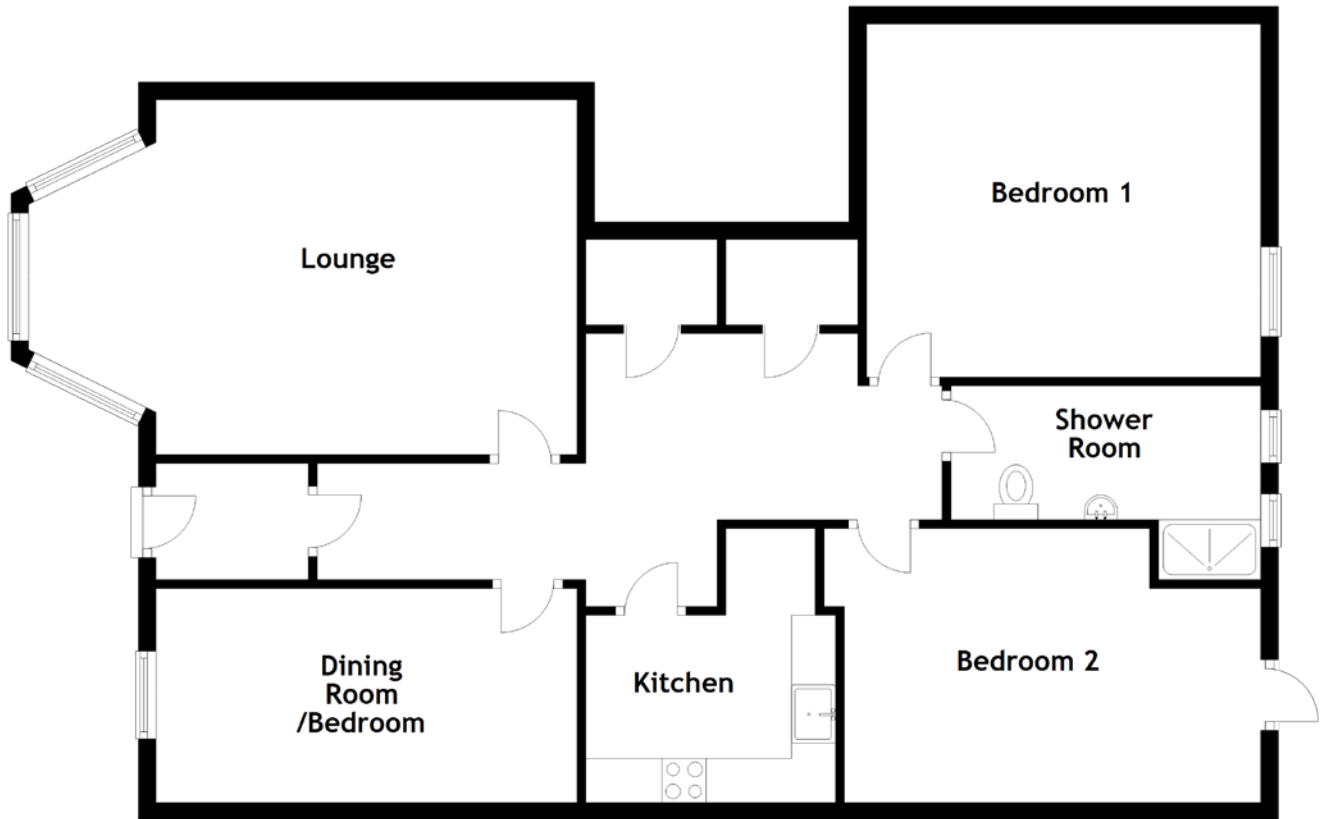


FLOOR PLAN, DIMENSIONS & MAP



Approximate Dimensions
(Taken from the widest point)

Lounge 6.23m (20'5") x 4.03m (13'3")
 Kitchen 3.11m (10'2") x 2.84m (9'4")
 Dining Room/Bedroom 4.78m (15'8") x 2.43m (8')

Bedroom 1 4.27m (14') x 4.01m (13'2")
 Bedroom 2 4.73m (15'6") x 3.11m (10'2")
 Shower Room 3.52m (11'7") x 2.20m (7'3")

Gross internal floor area (m²): 100m²
 EPC Rating: C

