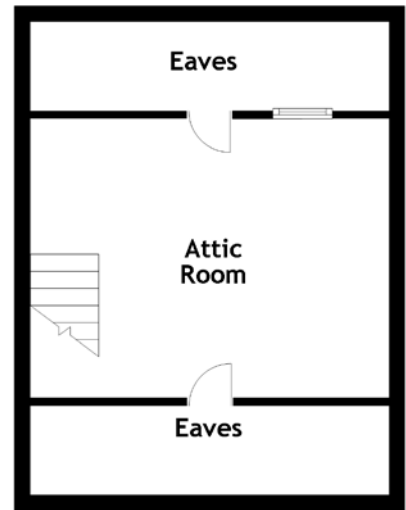
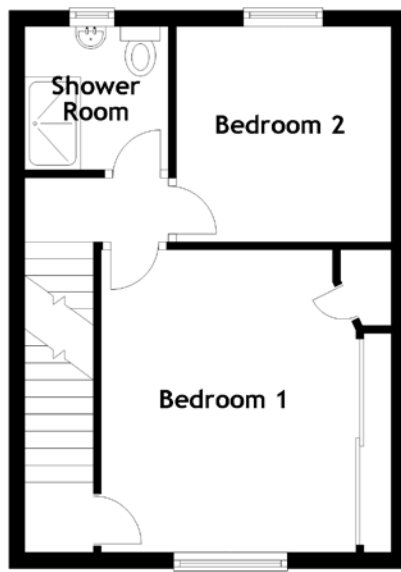
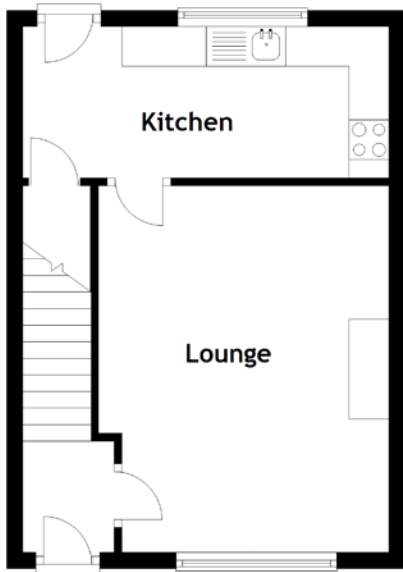


FLOOR PLAN, DIMENSIONS & MAP



Approximate Dimensions
(Taken from the widest point)

Lounge 4.60m (15'1") x 3.65m (12')
 Kitchen 4.60m (15'1") x 1.90m (6'3")
 Bedroom 1 3.80m (12'5") x 3.20m (10'6")

Bedroom 2 2.70m (8'10") x 2.70m (8'10")
 Shower Room 1.85m (6'1") x 1.80m (5'11")
 Attic Room 4.50m (14'9") x 3.50m (11'6")

Gross internal floor area (m²): 77m²
 EPC Rating: D

