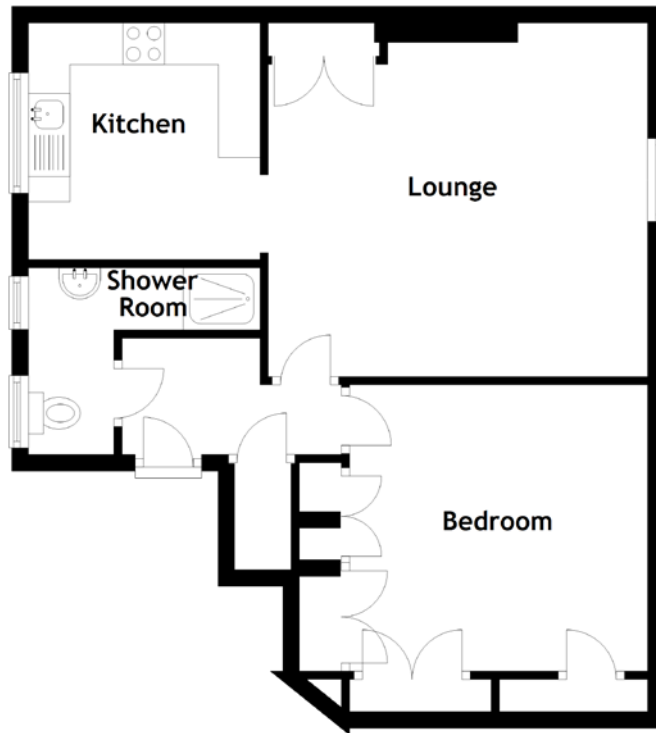


FLOOR PLAN, DIMENSIONS & MAP



Approximate Dimensions
(Taken from the widest point)

Lounge 4.57m (15') x 4.26m (14')
Kitchen 2.85m (9'4") x 2.79m (9'2")

Bedroom 3.45m (11'4") x 3.28m (10'9")
Shower Room 2.79m (9'2") x 2.25m (7'5")

Gross internal floor area (m²): 48m²
EPC Rating: C

