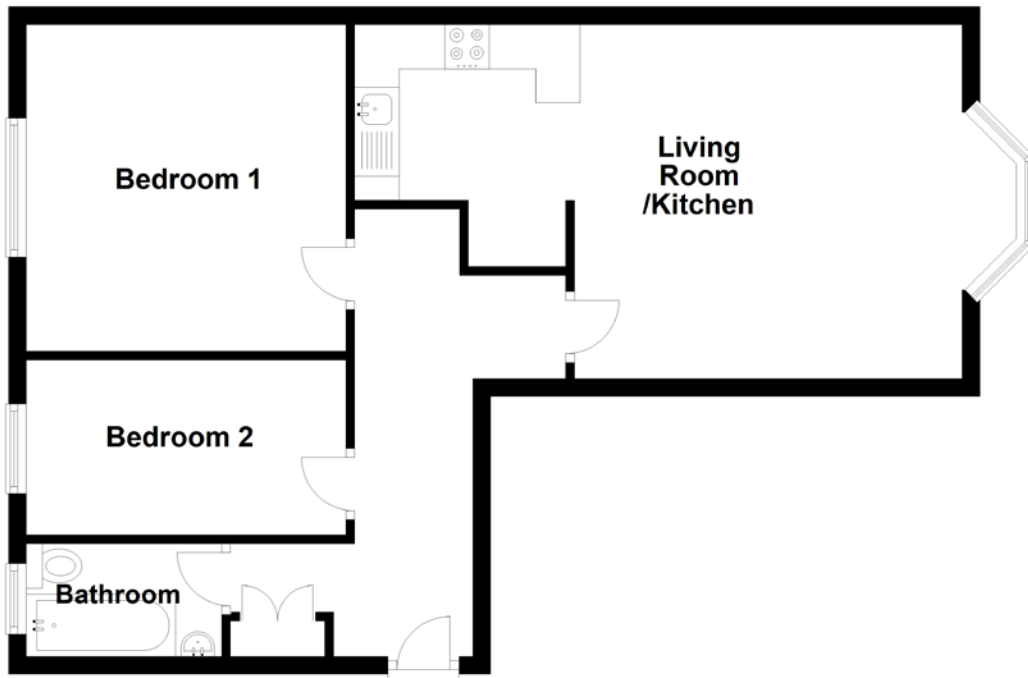


FLOOR PLAN, DIMENSIONS & MAP



Approximate Dimensions
(Taken from the widest point)

Living Room/Kitchen 7.46m (24'6") x 3.99m (13'1")
Bedroom 1 3.68m (12'1") x 3.55m (11'8")

Bedroom 2
Bathroom

3.60m (11'10") x 1.97m (6'6")
2.20m (7'3") x 1.27m (4'2")

Gross internal floor area (m²): 61m²
EPC Rating: D

