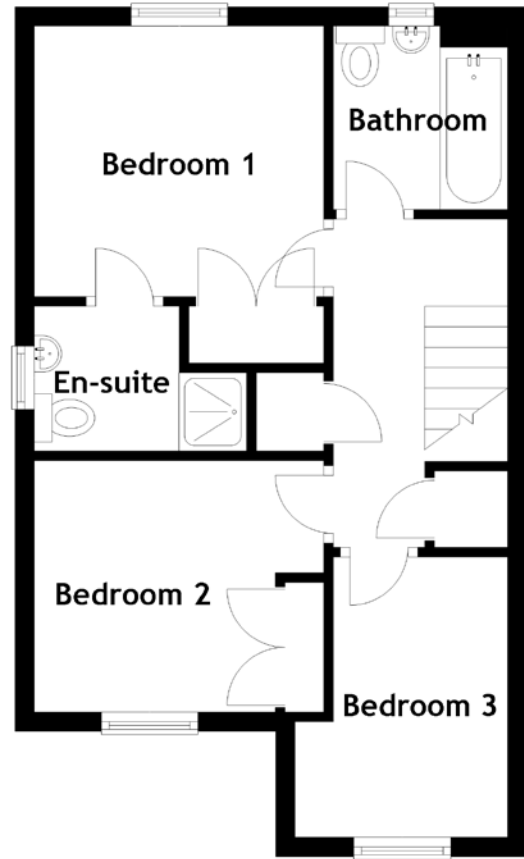
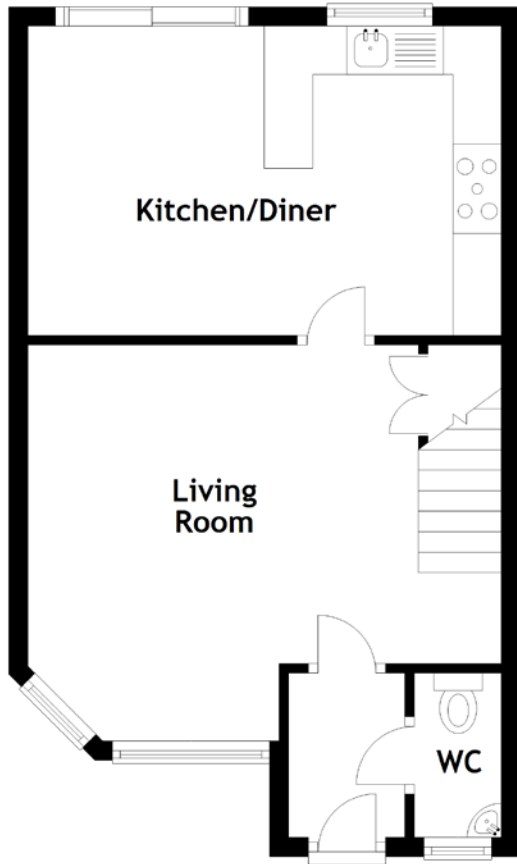


FLOOR PLAN, DIMENSIONS & MAP



Approximate Dimensions
(Taken from the widest point)

Living Room	4.90m (16'1") x 4.10m (13'5")
Kitchen/Diner	4.90m (16'1") x 3.20m (10'6")
WC	1.70m (5'7") x 0.90m (2'11")
Bathroom	1.90m (6'3") x 1.80m (5'11")

Bedroom 1	3.00m (9'10") x 2.80m (9'2")
En-suite	1.50m (4'11") x 1.50m (4'11")
Bedroom 2	3.00m (9'10") x 2.60m (8'6")
Bedroom 3	2.90m (9'6") x 2.20m (7'3")

Gross internal floor area (m²): 84m²
EPC Rating: C

