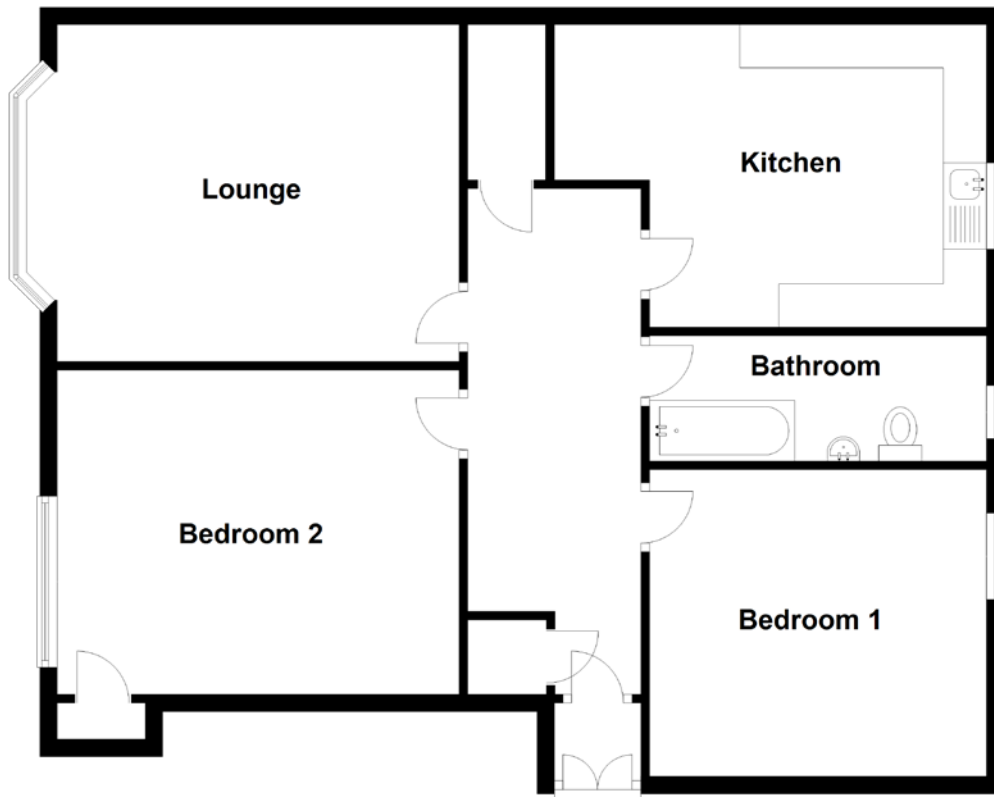


FLOOR PLAN, DIMENSIONS & MAP



Approximate Dimensions (Taken from the widest point)

Lounge 4.65m (15'3") x 3.90m (12'10")
 Kitchen 5.00m (16'5") x 3.50m (11'6")
 Bedroom 1 3.90m (12'9") x 3.55m (11'8")

Bedroom 2 4.65m (15'3") x 3.75m (12'4")
 Bathroom 3.90m (12'9") x 1.45m (4'9")

Gross internal floor area (m²): 94m²
 EPC Rating: D

