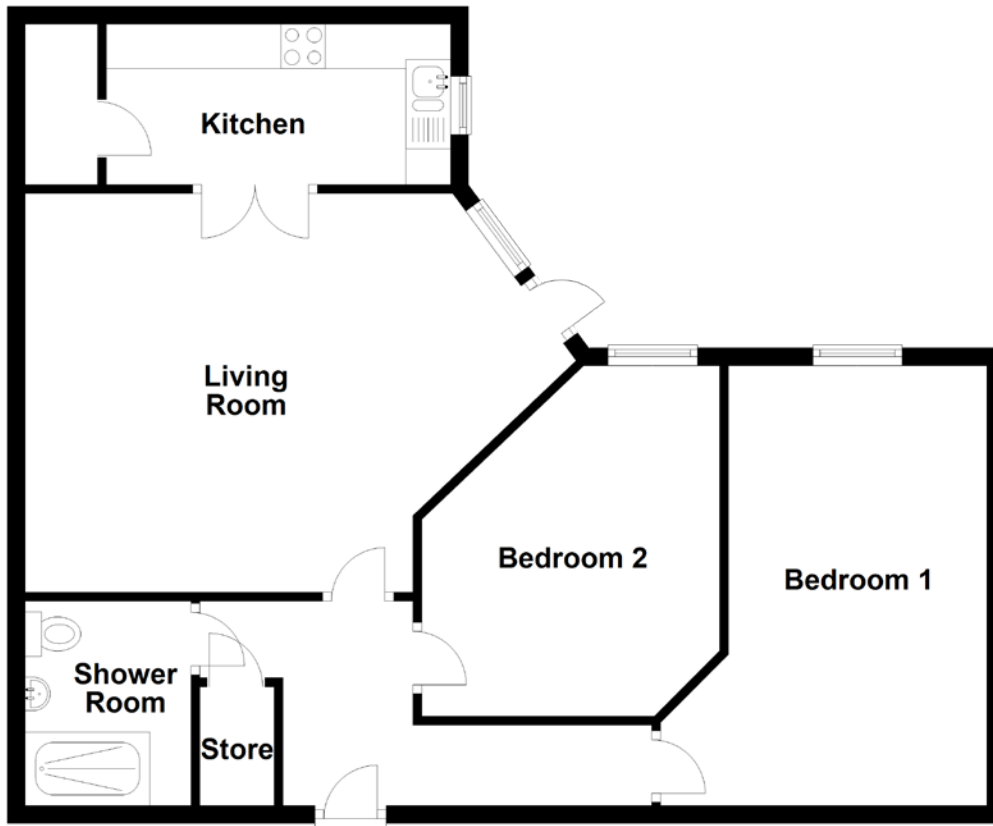


FLOOR PLAN, DIMENSIONS & MAP



Approximate Dimensions (Taken from the widest point)

Living Room 6.20m (20'4") x 4.47m (14'8")
Kitchen 3.86m (12'8") x 1.80m (5'11")
Bedroom 1 4.93m (16'2") x 3.66m (12')

Bedroom 2 3.93m (12'11") x 3.34m (10'11")
Shower Room 2.22m (7'3") x 1.86m (6'1")

Gross internal floor area (m²): 74m²
EPC Rating: C

