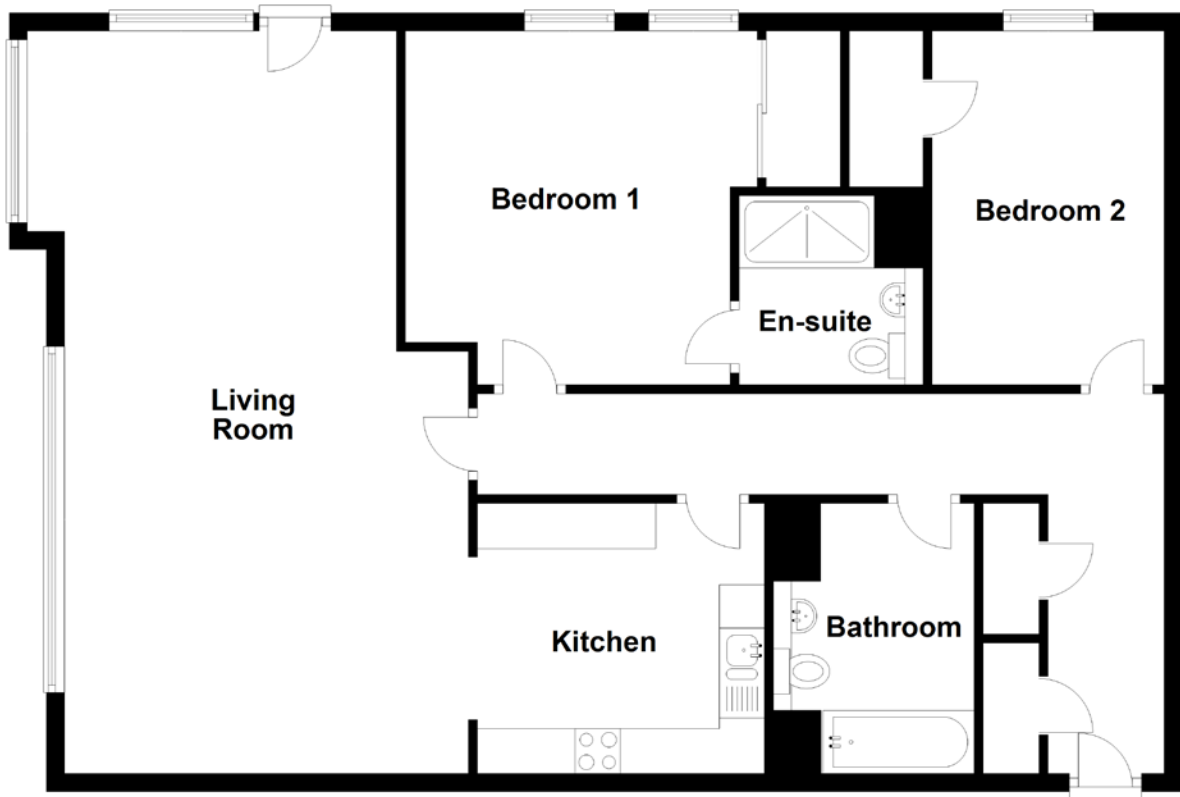


# FLOOR PLAN, DIMENSIONS & MAP



Approximate Dimensions  
(Taken from the widest point)

Living Room 8.25m (27'1") x 4.49m (14'9")  
 Kitchen 3.19m (10'6") x 3.00m (9'10")  
 Bedroom 1 3.93m (12'11") x 3.91m (12'10")

En-suite 2.10m (6'11") x 2.04m (6'8")  
 Bedroom 2 3.93m (12'11") x 2.58m (8'6")  
 Bathroom 3.00m (9'10") x 2.23m (7'4")

Gross internal floor area (m<sup>2</sup>): 103m<sup>2</sup>  
 EPC Rating: B

