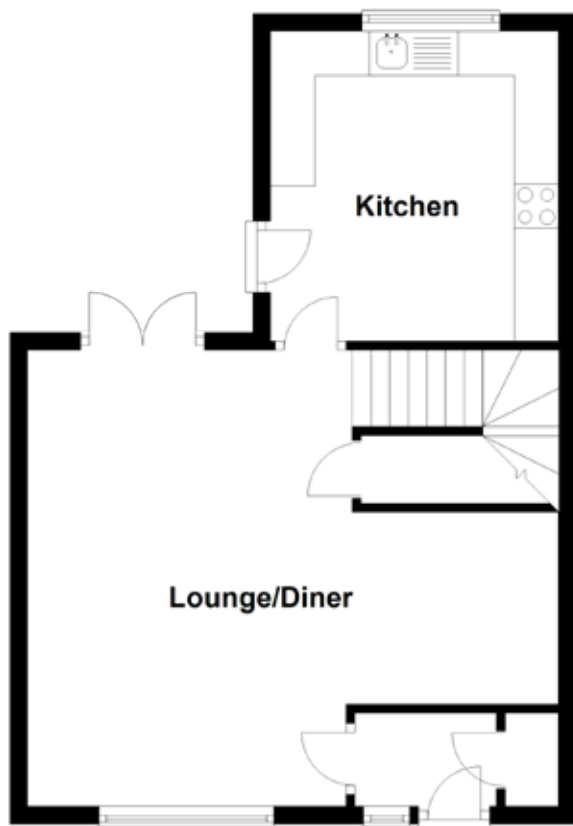


FLOOR PLAN, DIMENSIONS & MAP



Approximate Dimensions (Taken from the widest point)

Kitchen	3.50m (11'6") x 3.25m (10'8")
Lounge/Diner	6.00m (19'8") x 5.15m (16'11")
Bathroom	2.00m (6'7") x 1.80m (5'11")
Bedroom 1	3.60m (11'10") x 3.30m (10'10")
Bedroom 2	3.20m (10'6") x 3.00m (9'10")

Bedroom 3

3.00m (9'10") x 2.70m (8'10")

Gross internal floor area (m²): 85m²

EPC Rating: C

Extras (Included in the sale): All fitted carpets and floor coverings, curtains and blinds, light fixtures and fittings.

