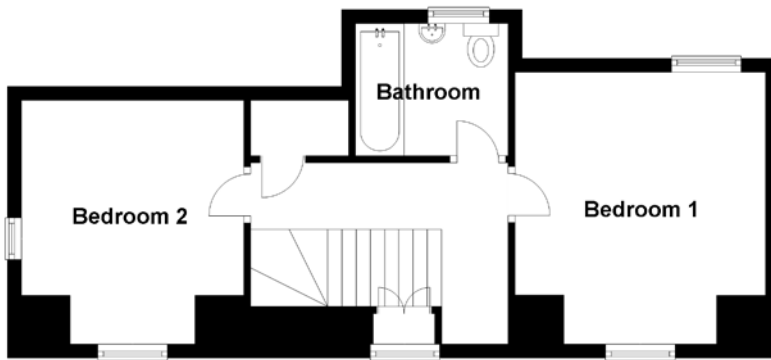
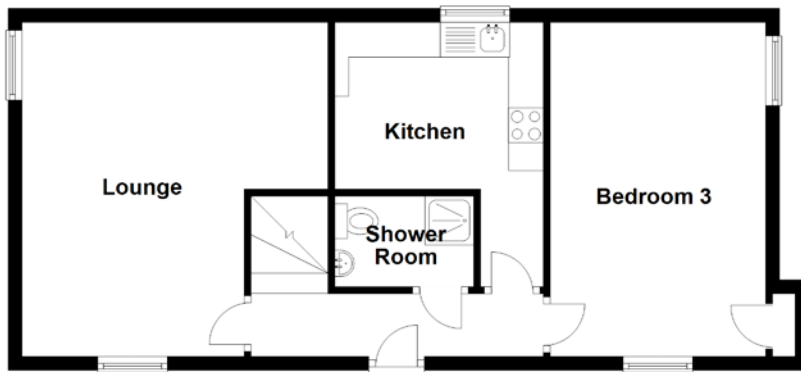


FLOOR PLAN, DIMENSIONS & MAP



Approximate Dimensions (Taken from the widest point)

Lounge	4.70m (15'5") x 4.40m (14'5")
Kitchen	3.80m (12'6") x 3.00m (9'10")
Bedroom 1	3.90m (12'9") x 3.60m (11'10")
Bedroom 2	3.50m (11'6") x 3.10m (10'2")
Bedroom 3	4.80m (15'9") x 3.10m (10'2")
Shower Room	2.00m (6'7") x 1.10m (3'7")
Bathroom	2.20m (7'2") x 1.90m (6'3")

Laundry Room
WC

3.20m (10'6") x 3.10m (10'2")
1.30m (4'3") x 0.90m (2'11")

Gross internal floor area (m²): 75m²
EPC Rating: D

Extras (Included in the sale): All floor coverings, blinds, curtains, and light fittings. All additional furniture and electrical items are also available by separate negotiation.

