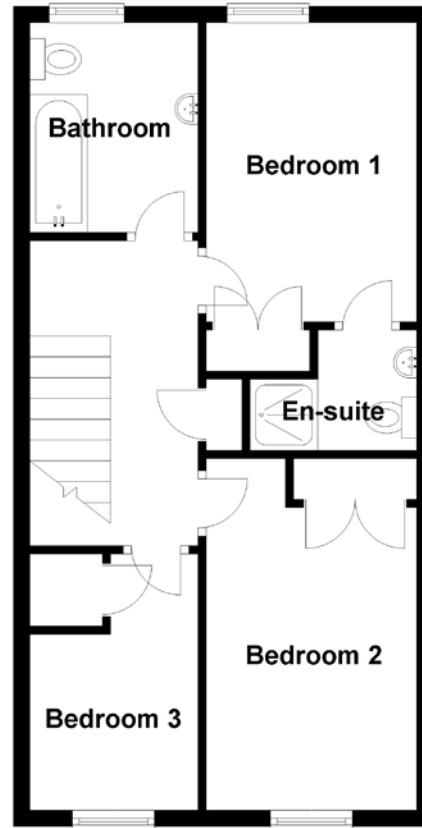
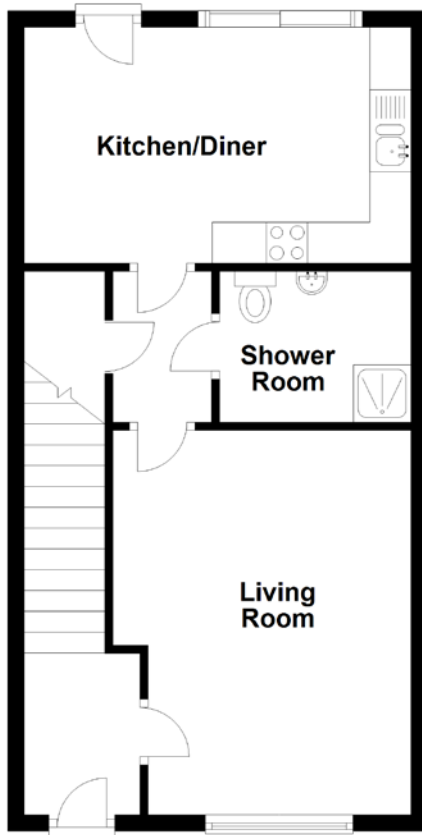


FLOOR PLAN, DIMENSIONS & MAP



Approximate Dimensions
(Taken from the widest point)

Living Room	4.69m (15'5") x 3.63m (11'11")
Kitchen/Diner	4.71m (15'5") x 2.88m (9'5")
Shower Room	2.33m (7'8") x 1.84m (6')
Bedroom 1	3.65m (12') x 2.58m (8'6")

En-suite	2.03m (6'8") x 1.51m (4'11")
Bedroom 2	4.29m (14'1") x 2.60m (8'6")
Bedroom 3	3.13m (10'3") x 2.08m (6'10")
Bathroom	2.56m (8'5") x 2.05m (6'9")

Gross internal floor area (m²): 94m²
EPC Rating: C

