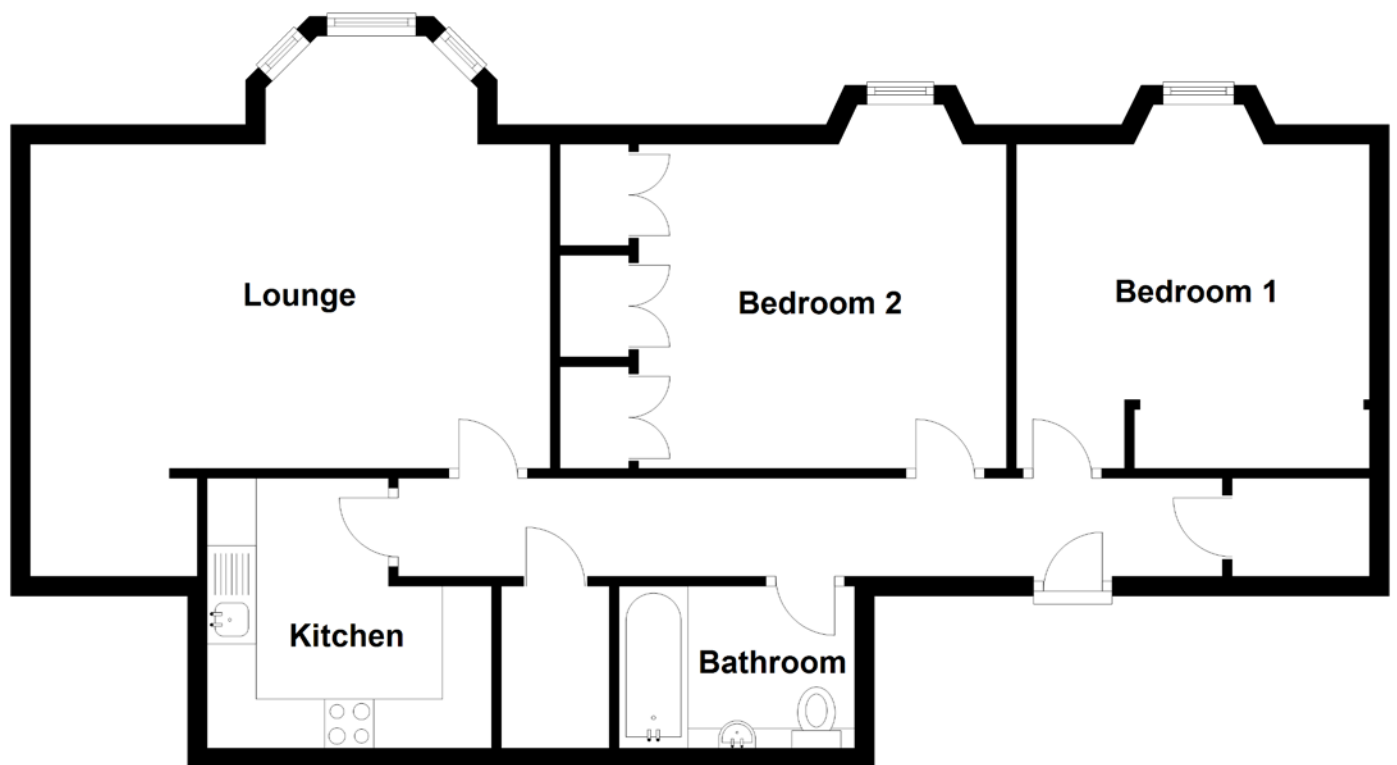


FLOOR PLAN, DIMENSIONS & MAP



Approximate Dimensions (Taken from the widest point)

Lounge	5.50m (18'1") x 5.30m (17'5")
Kitchen	2.90m (9'6") x 2.75m (9')
Bedroom 1	3.60m (11'10") x 3.30m (10'10")
Bedroom 2	3.75m (12'4") x 3.30m (10'10")
Bathroom	2.40m (7'10") x 1.65m (5'5")

Gross internal floor area (m²): 67m²
EPC Rating: C

Extras (Included in the sale): Furniture and large mirror in the living room and bedrooms is available by separate negotiation. Not included in the sale - large heating panel in the living room.

