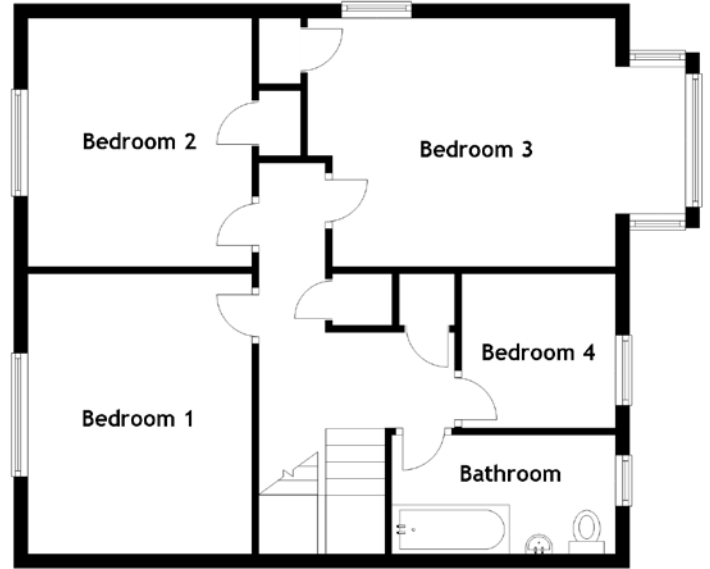
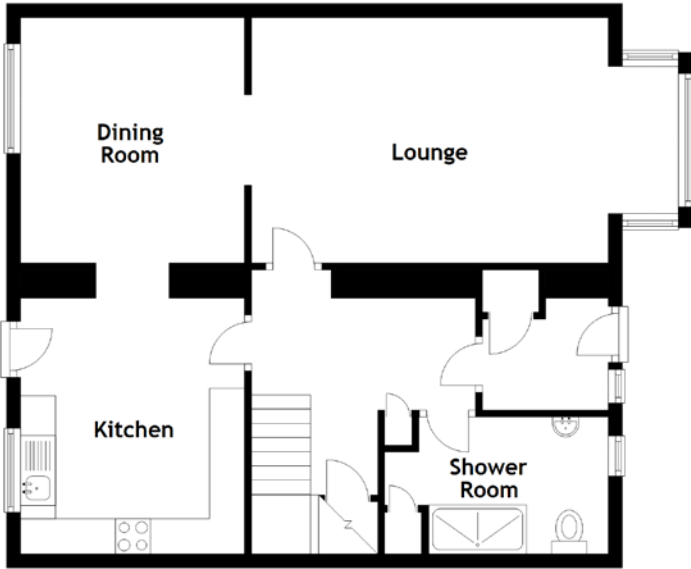


# FLOOR PLAN, DIMENSIONS & MAP



Approximate Dimensions  
(Taken from the widest point)

Lounge 6.10m (20') max x 3.50m (11'6")  
 Dining Room 3.50m (11'6") x 3.20m (10'6")  
 Kitchen 3.65m (12') x 3.20m (10'6")  
 Shower Room 3.20m (10'6") x 1.95m (6'5")  
 Bedroom 1 3.65m (12') x 3.20m (10'6")

Bedroom 2 3.55m (11'8") x 3.20m (10'6")  
 Bedroom 3 5.40m (17'9") x 3.55m (11'8")  
 Bedroom 4 2.20m (7'3") x 2.20m (7'3")  
 Bathroom 3.20m (10'6") x 1.70m (5'7")

Gross internal floor area (m<sup>2</sup>): 127m<sup>2</sup> | EPC Rating: D

Buyer's Premium Value: £1250.00

