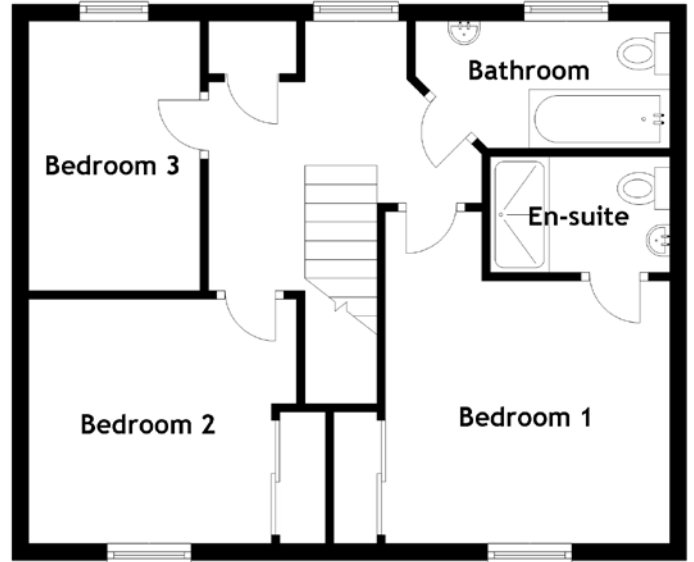
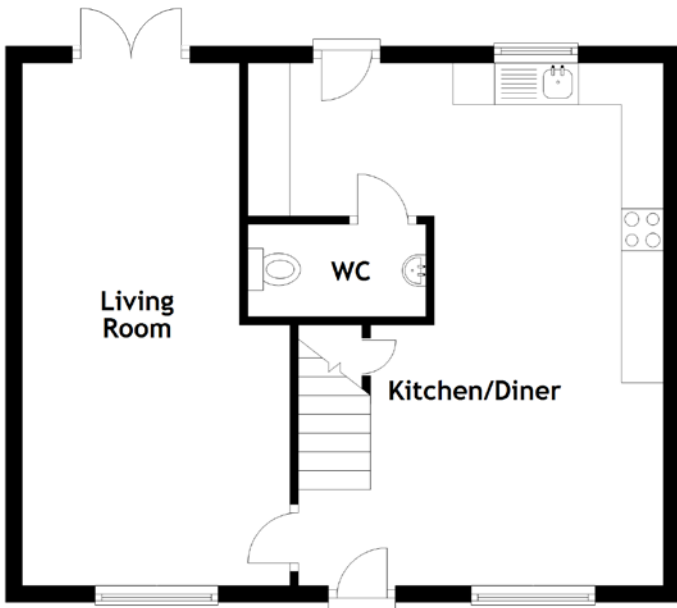


FLOOR PLAN, DIMENSIONS & MAP



Approximate Dimensions (Taken from the widest point)

Living Room	6.23m (20'5") x 3.19m (10'6")
Kitchen/Diner	6.23m (20'5") x 4.95m (16'3")
WC	2.12m (6'11") x 1.10m (3'7")
Bathroom	3.03m (9'11") x 1.52m (5')
Bedroom 1	3.96m (13') x 3.27m (10'9")

En-suite	2.14m (7') x 1.38m (4'6")
Bedroom 2	3.22m (10'7") x 2.94m (9'8")
Bedroom 3	3.21m (10'7") x 2.04m (6'8")

Gross internal floor area (m²): 96m²

EPC Rating: C

