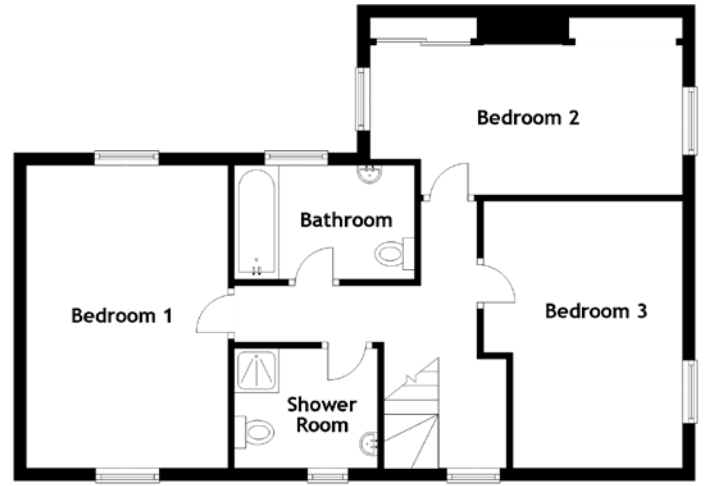
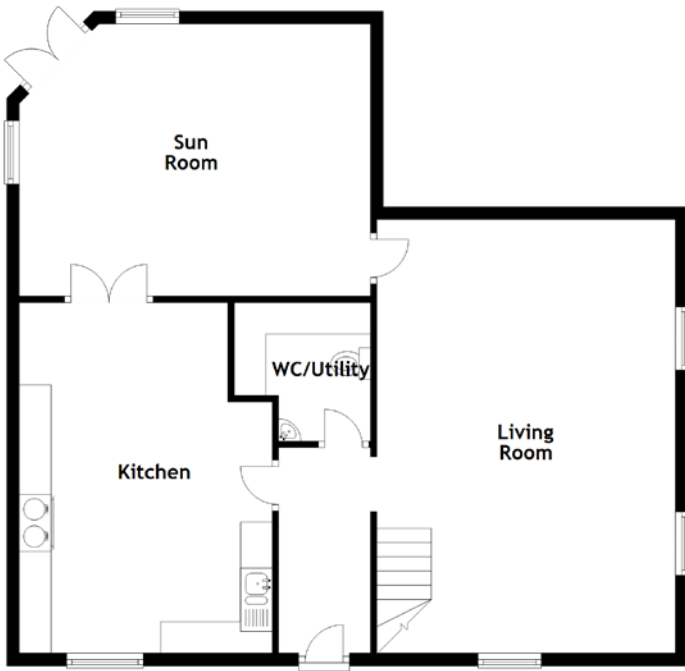


FLOOR PLAN, DIMENSIONS & MAP



Approximate Dimensions (Taken from the widest point)

Living Room	6.85m (22'6") x 4.71m (15'5")
Kitchen	5.75m (18'10") x 3.99m (13'1")
Sun Room	4.91m (16'1") x 4.30m (14'1")
WC/Utility	2.19m (7'2") x 2.15m (7'1")
Bedroom 1	4.78m (15'8") x 3.40m (11'2")

Bedroom 2	4.93m (16'2") x 2.37m (7'9")
Bedroom 3	4.21m (13'10") x 3.14m (10'4")
Shower Room	2.26m (7'5") x 1.89m (6'2")
Bathroom	3.00m (9'10") x 1.80m (5'11")

Gross internal floor area (m²): 153m²
EPC Rating: F

