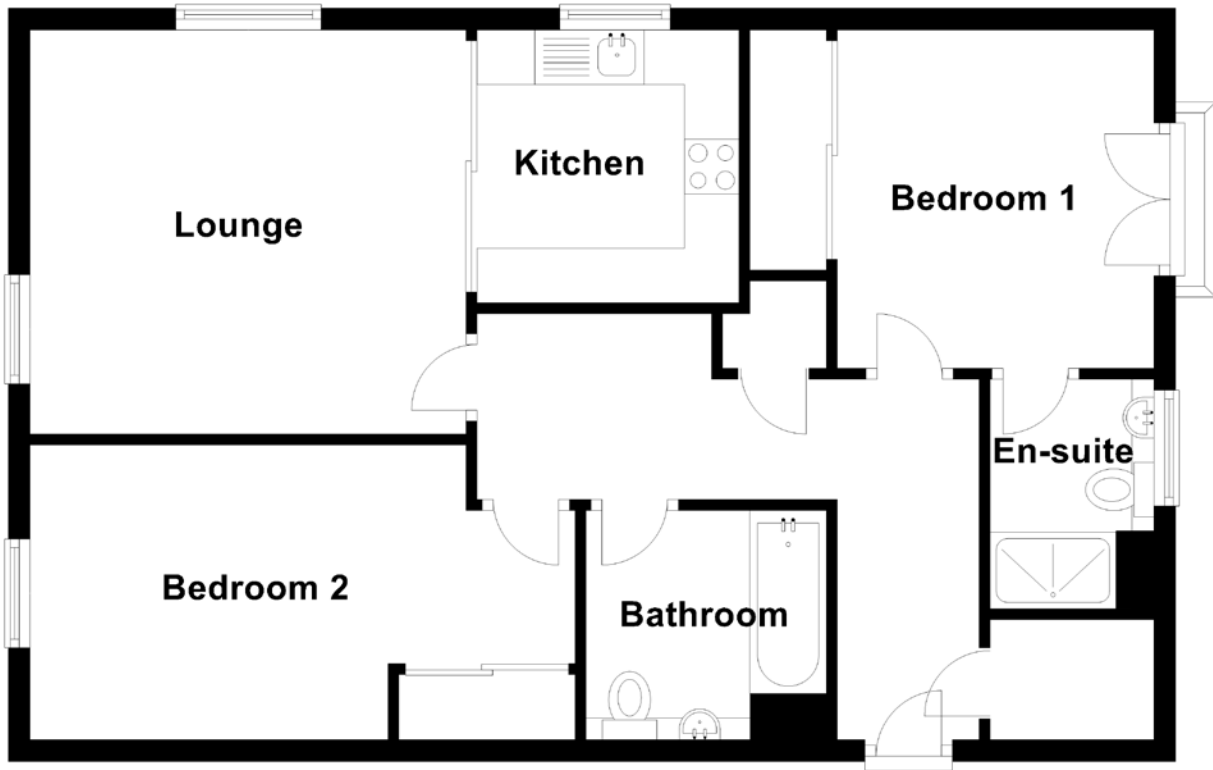


FLOOR PLAN, DIMENSIONS & MAP



Approximate Dimensions (Taken from the widest point)

Lounge	4.00m (13'1") x 3.70m (12'2")
Kitchen	2.50m (8'2") x 2.40m (7'10")
Bedroom 1	3.10m (10'2") x 2.90m (9'6")
En-suite	2.10m (6'11") x 1.50m (4'11")
Bedroom 2	5.00m (16'5") x 2.70m (8'10")
Bathroom	2.20m (7'3") x 2.10m (6'11")

Gross internal floor area (m²): 68m²

EPC Rating: B

Extras (Included in the sale): Selected fixtures and fittings, including; blinds, curtains, light fittings, carpets and fitted floor coverings. Please note, other items may be available through separate negotiation.

