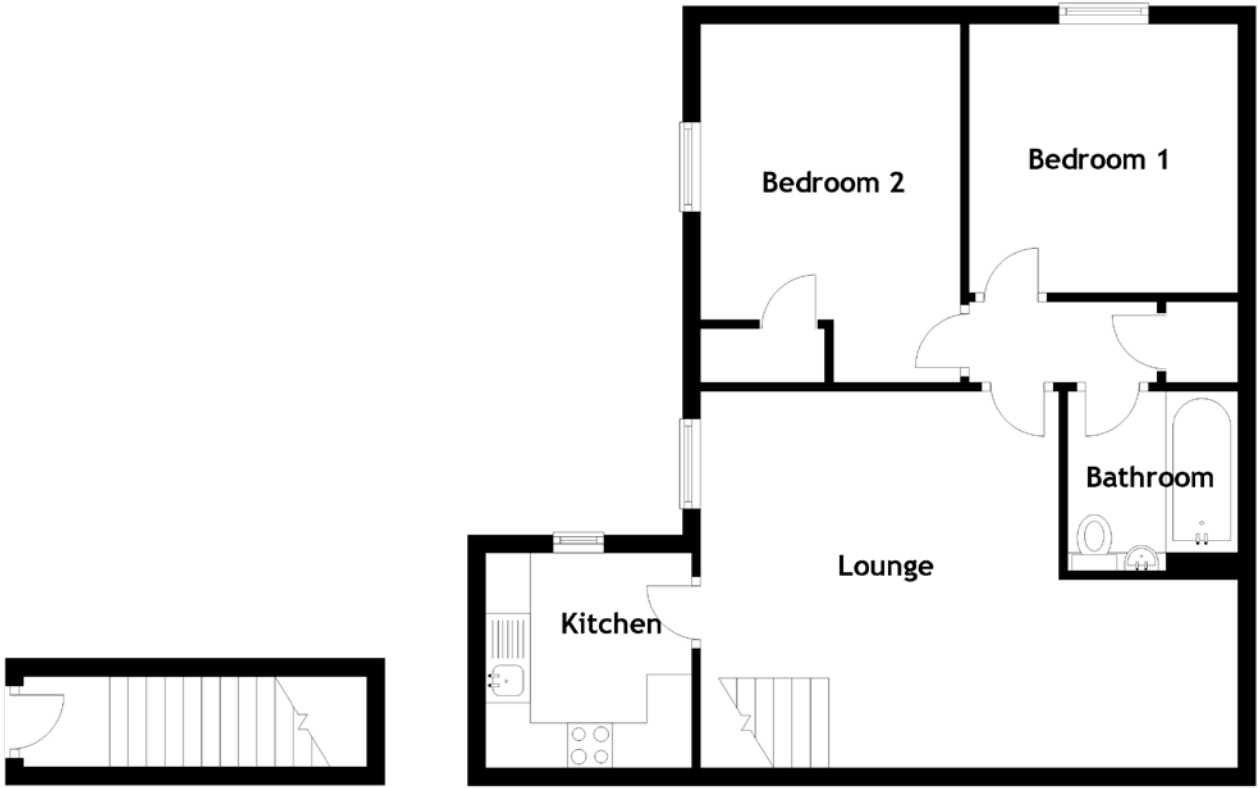


FLOOR PLAN, DIMENSIONS & MAP



Approximate Dimensions (Taken from the widest point)

Lounge 6.00m (19'8") x 4.20m (13'9")
 Kitchen 2.40m (7'10") x 2.30m (7'7")
 Bedroom 1 3.00m (9'10") x 3.00m (9'10")

Bedroom 2 4.00m (13'1") x 2.90m (9'6")
 Bathroom 2.00m (6'7") x 1.90m (6'3")

Gross internal floor area (m²): 56m²
 EPC Rating: C

