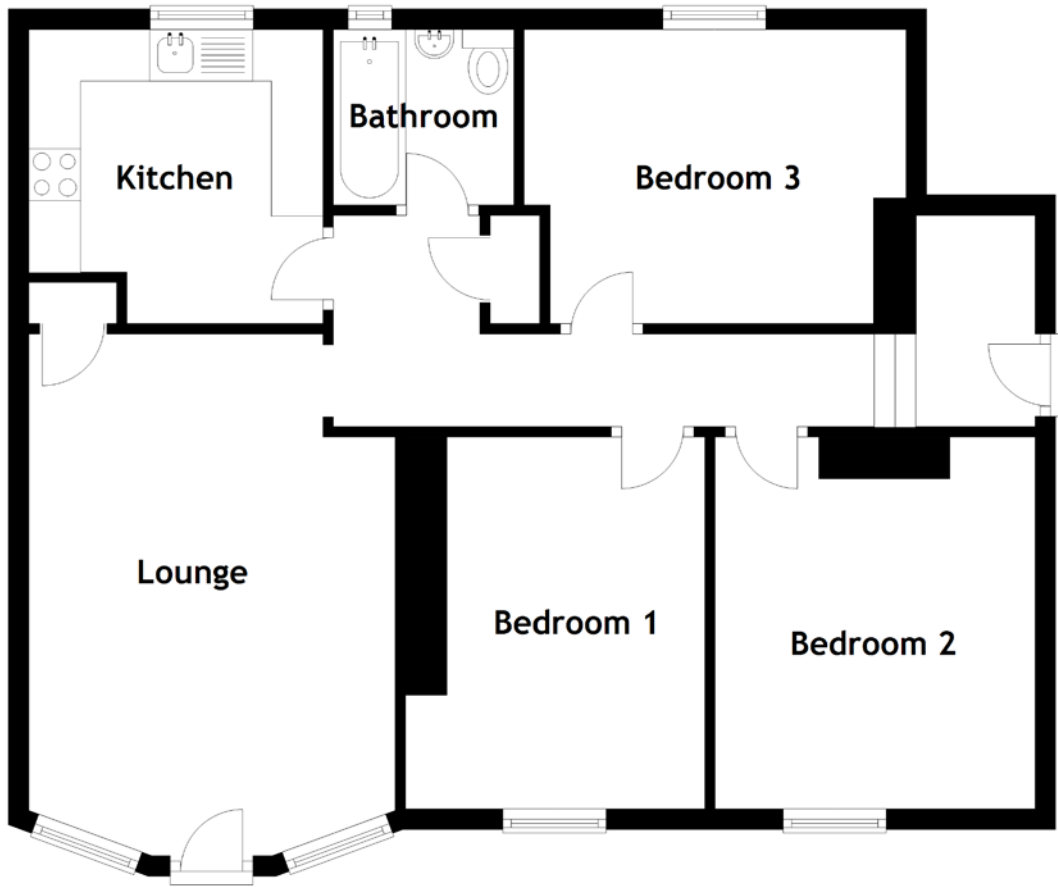


FLOOR PLAN, DIMENSIONS & MAP



Approximate Dimensions (Taken from the widest point)

Lounge	4.60m (15'1") x 3.55m (11'8")
Kitchen	2.85m (9'4") x 2.85m (9'4")
Bathroom	1.75m (5'9") x 1.70m (5'7")
Bedroom 1	3.50m (11'6") x 2.90m (9'6")
Bedroom 2	3.50m (11'6") x 3.10m (10'2")
Bedroom 3	3.70m (12'2") x 2.85m (9'4")

Gross internal floor area (m²): 74m²

EPC Rating: C

Extras: Carpets and floor coverings, light fixtures and fittings, curtains and blinds.

