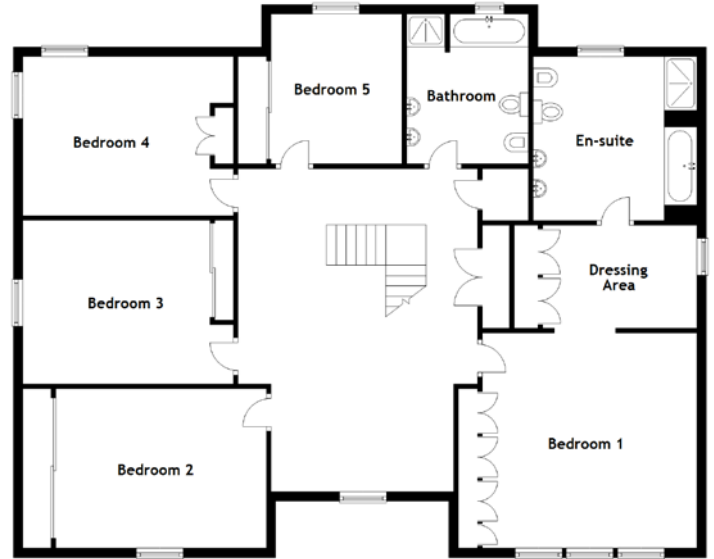
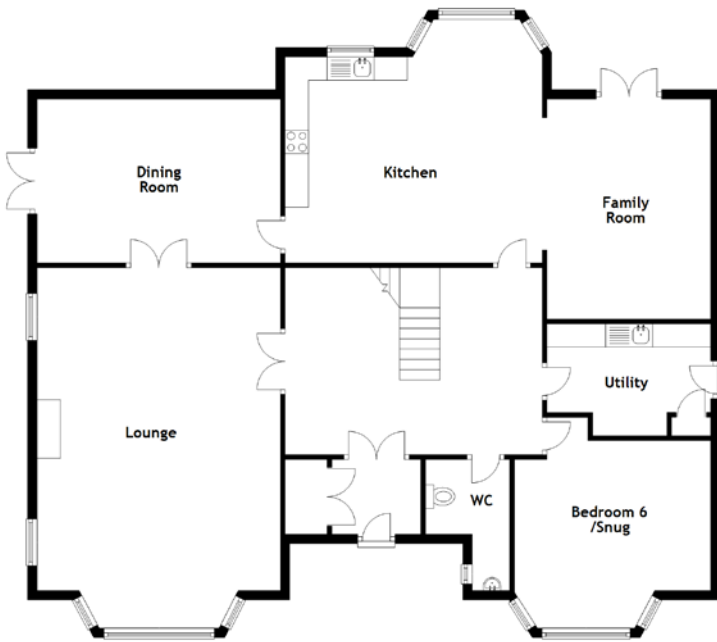


FLOOR PLAN, DIMENSIONS & MAP



Approximate Dimensions
(Taken from the widest point)

Lounge	6.90m (22'8") x 5.20m (17'1")
Dining Room	5.20m (17'1") x 3.50m (11'6")
Kitchen	5.50m (18') x 4.40m (14'5")
Family Room	4.70m (15'5") x 3.50m (11'6")
Utility	3.50m (11'6") x 2.40m (7'10")
Bedroom 6/Snug	4.20m (13'9") x 2.80m (9'2")
WC	2.80m (9'2") x 1.80m (5'11")
Bathroom	3.20m (10'6") x 2.60m (8'6")
Bedroom 1	4.60m (15'1") x 4.59m (15'1")

Dressing Area	3.30m (10'10") x 2.20m (7'3")
En-suite	3.60m (11'10") x 3.50m (11'6")
Bedroom 2	4.50m (14'9") x 3.40m (11'2")
Bedroom 3	4.50m (14'9") x 3.50m (11'6")
Bedroom 4	4.50m (14'9") x 3.40m (11'2")
Bedroom 5	3.20m (10'6") x 2.80m (9'2")

Gross internal floor area (m²): 311m²
EPC Rating: D

Extras: Floor coverings, light fittings, blinds and window dressings.

