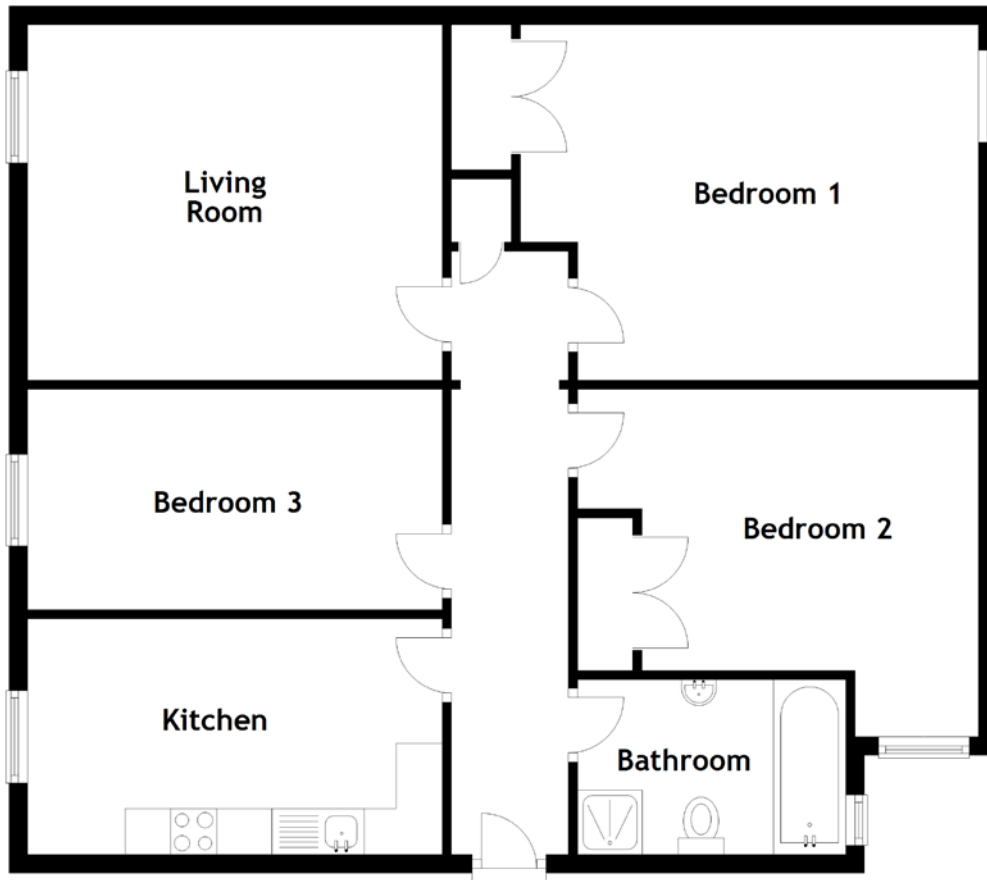


FLOOR PLAN, DIMENSIONS & MAP



Approximate Dimensions
(Taken from the widest point)

Living Room 4.50m (14'9") x 3.86m (12'8")
 Kitchen 4.50m (14'9") x 2.56m (8'5")
 Bathroom 2.91m (9'7") x 1.90m (6'3")

Bedroom 1 4.97m (16'4") x 3.76m (12'4")
 Bedroom 2 4.35m (14'3") x 3.72m (12'2")
 Bedroom 3 4.50m (14'9") x 2.39m (7'10")

Gross internal floor area (m²): 92m²
 EPC Rating: D

