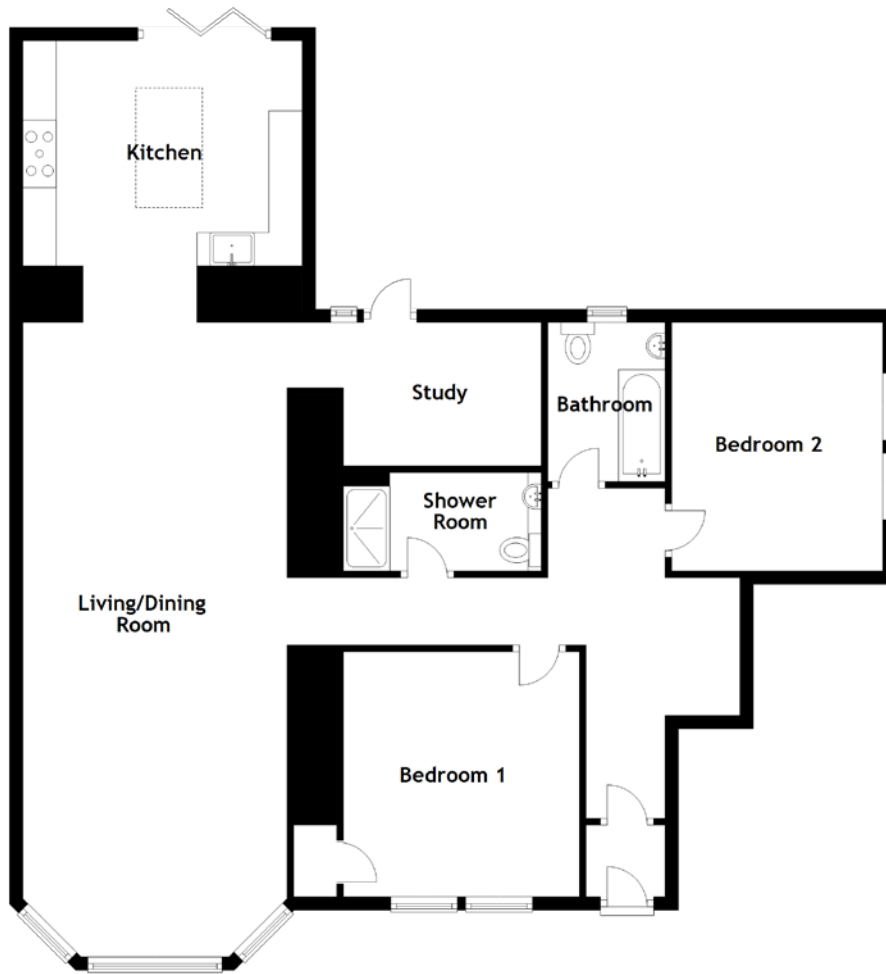


FLOOR PLAN, DIMENSIONS & MAP



Approximate Dimensions (Taken from the widest point)

Living/Dining Room	9.65m (31'8") x 9.52m (31'3")
Kitchen	4.20m (13'9") x 3.38m (11'1")
Study	3.72m (12'2") x 2.15m (7'1")
Bedroom 1	3.68m (12'1") x 3.55m (11'8")

Bedroom 2	3.47m (11'5") x 3.17m (10'5")
Shower Room	2.97m (9'9") x 1.48m (4'10")
Bathroom	2.39m (7'10") x 1.62m (5'4")

Gross internal floor area (m²): 114m²
EPC Rating: C

