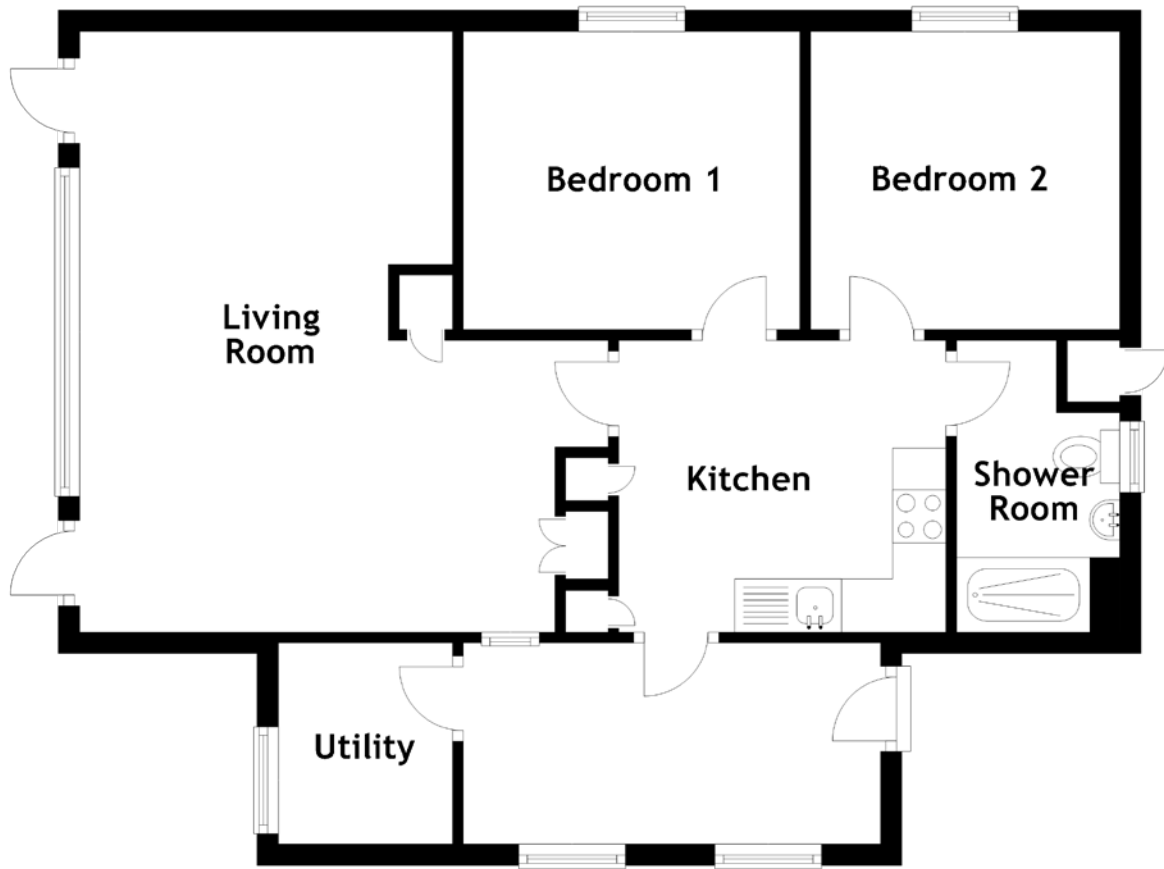


FLOOR PLAN, DIMENSIONS & MAP



Approximate Dimensions (Taken from the widest point)

Living Room
Kitchen

5.76m (18'11") x 3.50m (11'6")
3.07m (10'1") x 2.74m (9')

Utility
Bedroom 1
Bedroom 2
Shower Room

1.89m (6'2") x 1.64m (5'4")
3.16m (10'4") x 2.80m (9'2")
2.90m (9'6") x 2.80m (9'2")
2.74m (9') x 1.53m (5')

