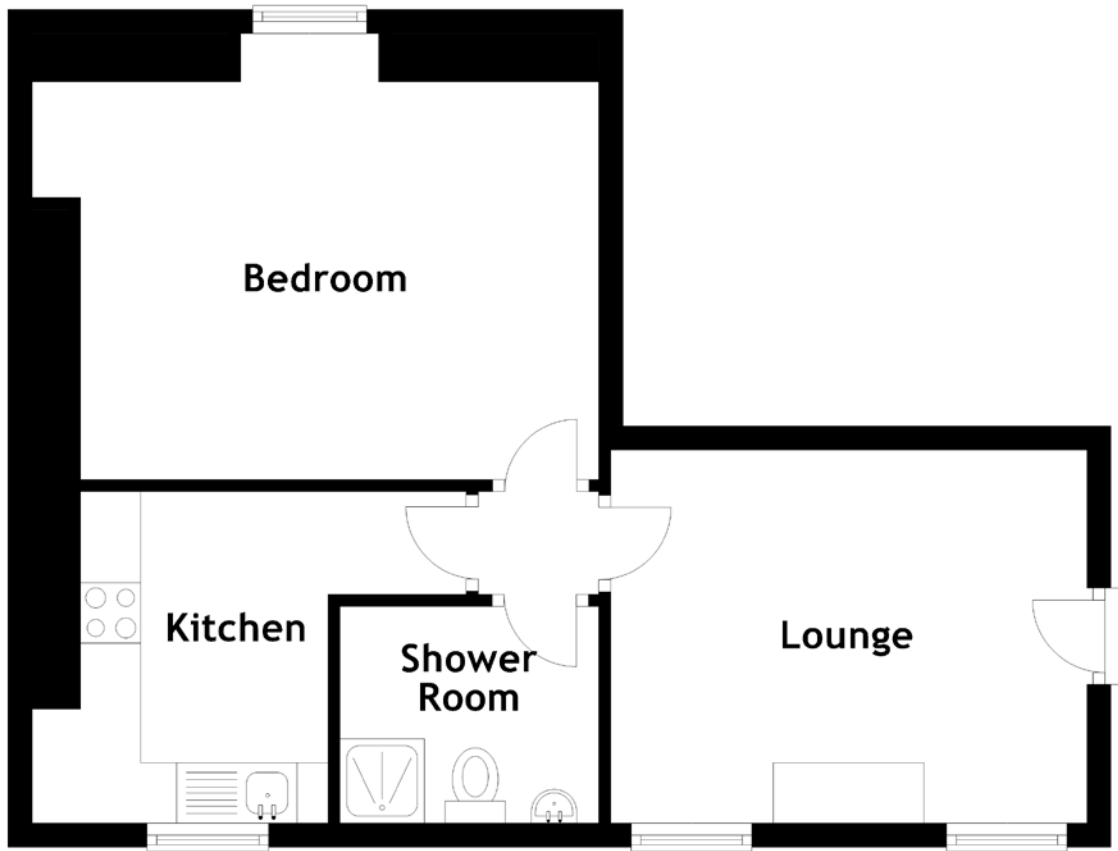


FLOOR PLAN, DIMENSIONS & MAP



Approximate Dimensions (Taken from the widest point)

Lounge	3.95m (13') x 3.10m (10'2")
Kitchen	3.20m (10'6") x 2.75m (9')
Bedroom	4.30m (14'1") x 3.30m (10'10")
Shower Room	2.15m (7'1") x 1.80m (5'11")

Gross internal floor area (m²): 39m²
EPC Rating: C

Extras: Carpets and floor coverings, light fixtures and fittings, curtains and blinds.

