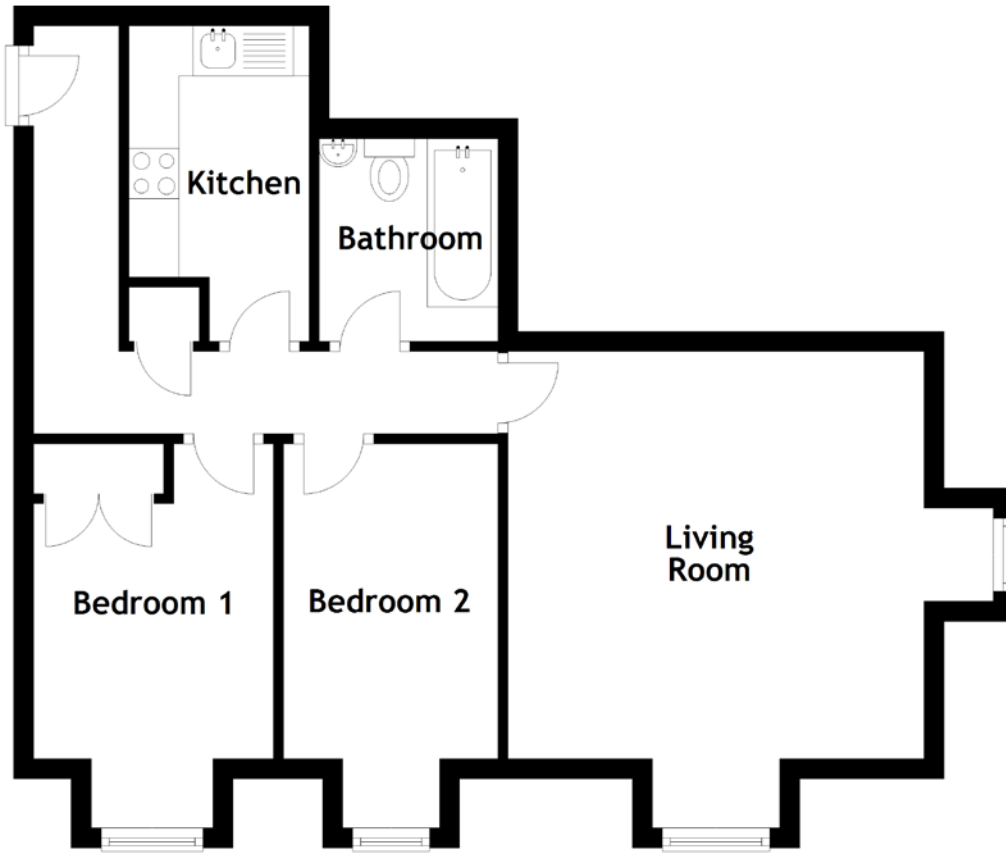


FLOOR PLAN, DIMENSIONS & MAP



Approximate Dimensions (Taken from the widest point)

Living Room 4.15m (13'7") x 4.06m (13'4")
 Kitchen 3.15m (10'4") x 1.80m (5'11")
 Bedroom 1 3.83m (12'7") x 2.39m (7'10")

Bedroom 2 3.14m (10'4") x 2.14m (7')
 Bathroom 2.02m (6'8") x 1.70m (5'7")

Gross internal floor area (m²): 47m²
 EPC Rating: D

