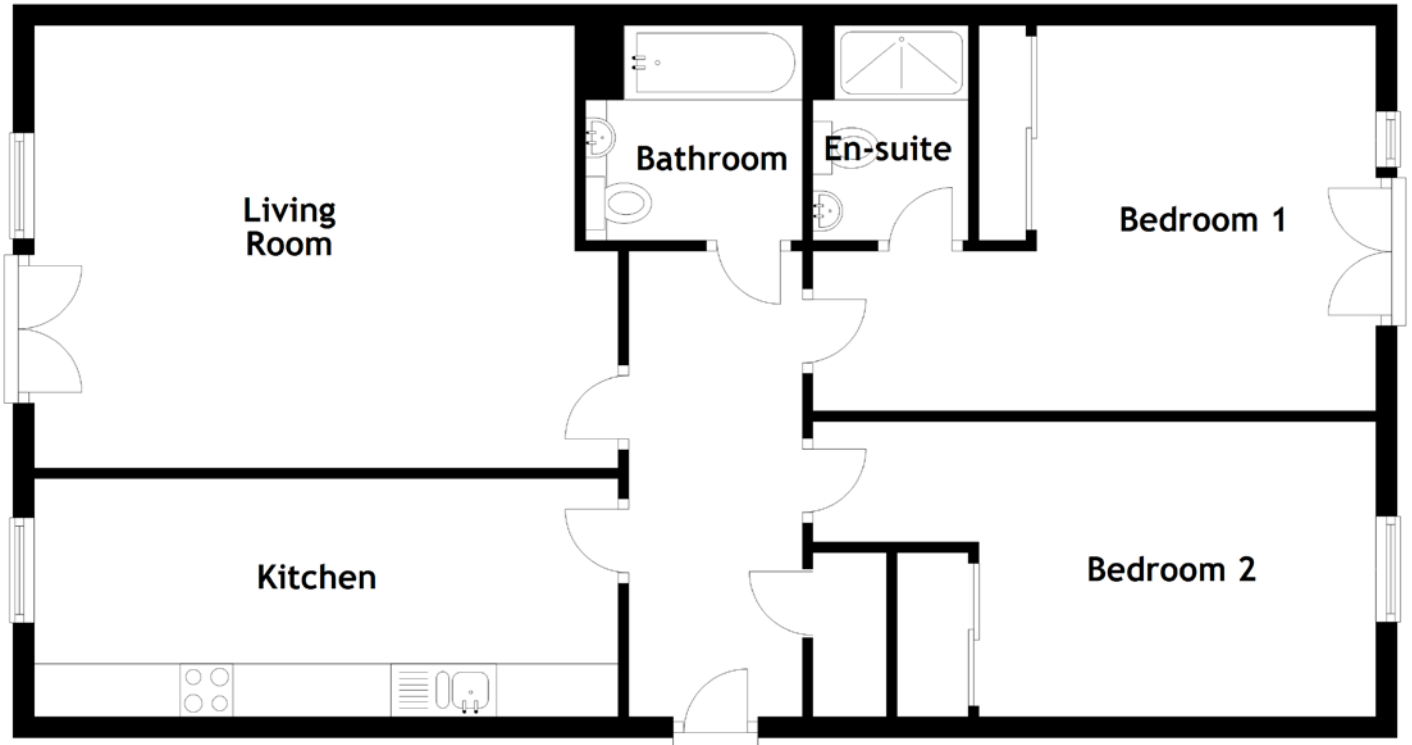


FLOOR PLAN, DIMENSIONS & MAP



Approximate Dimensions
(Taken from the widest point)

Living Room 6.31m (20'8") x 5.52m (18'1")
 Kitchen 5.52m (18'1") x 2.25m (7'5")
 Bathroom 2.05m (6'9") x 2.03m (6'8")

Bedroom 1 5.32m (17'6") x 3.64m (11'11")
 En-suite 2.03m (6'8") x 1.47m (4'10")
 Bedroom 2 5.32m (17'6") x 2.79m (9'2")

Gross internal floor area (m²): 84m²
 EPC Rating: B

