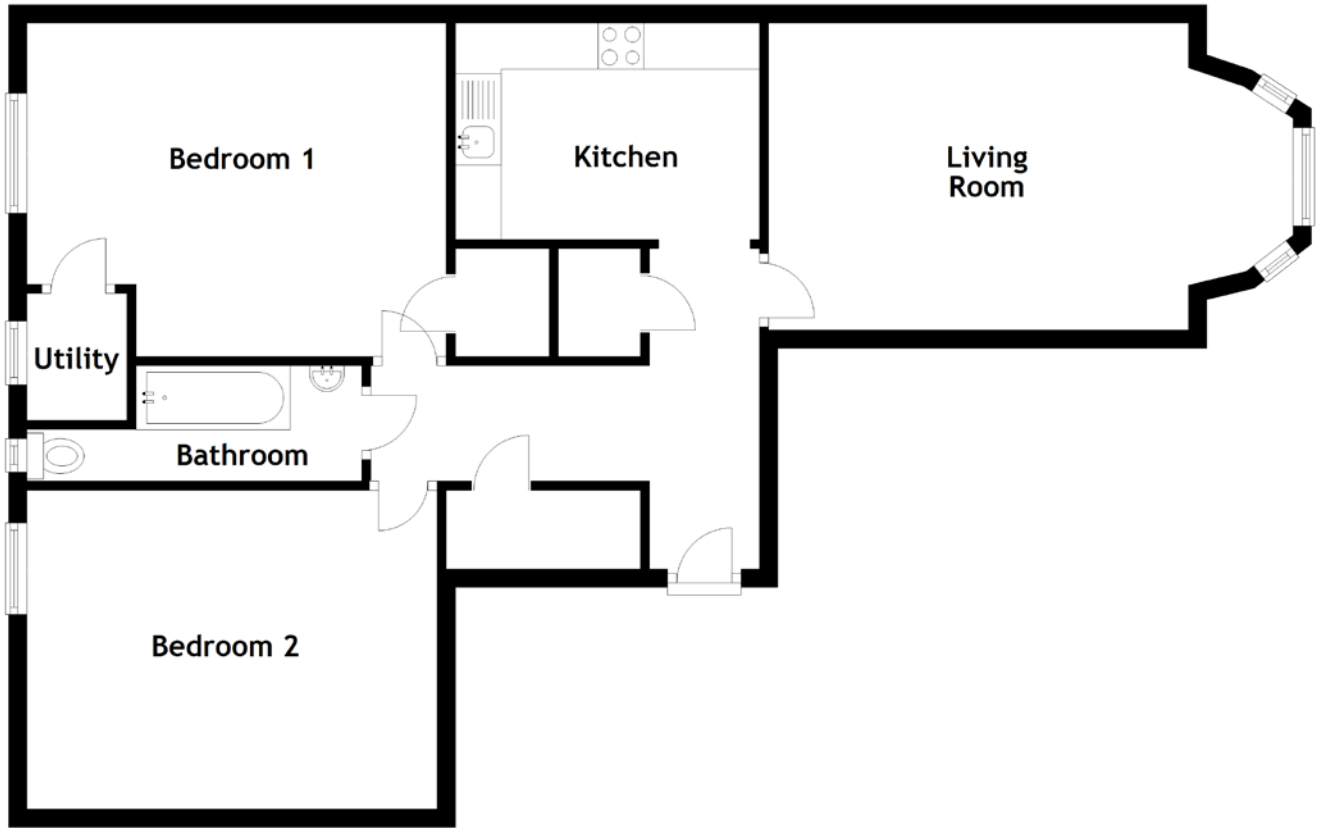


FLOOR PLAN, DIMENSIONS & MAP



Approximate Dimensions (Taken from the widest point)

Living Room 5.73m (18'10") x 3.35m (11')
 Kitchen 3.32m (10'11") x 2.36m (7'9")
 Bedroom 1 4.58m (15') x 3.64m (11'11")
 Bedroom 2 4.48m (14'8") x 3.48m (11'5")

Bathroom 3.66m (12') x 1.26m (4'2")
 Utility 1.39m (4'7") x 1.09m (3'7")

Gross internal floor area (m²): 82m²

EPC Rating: C

