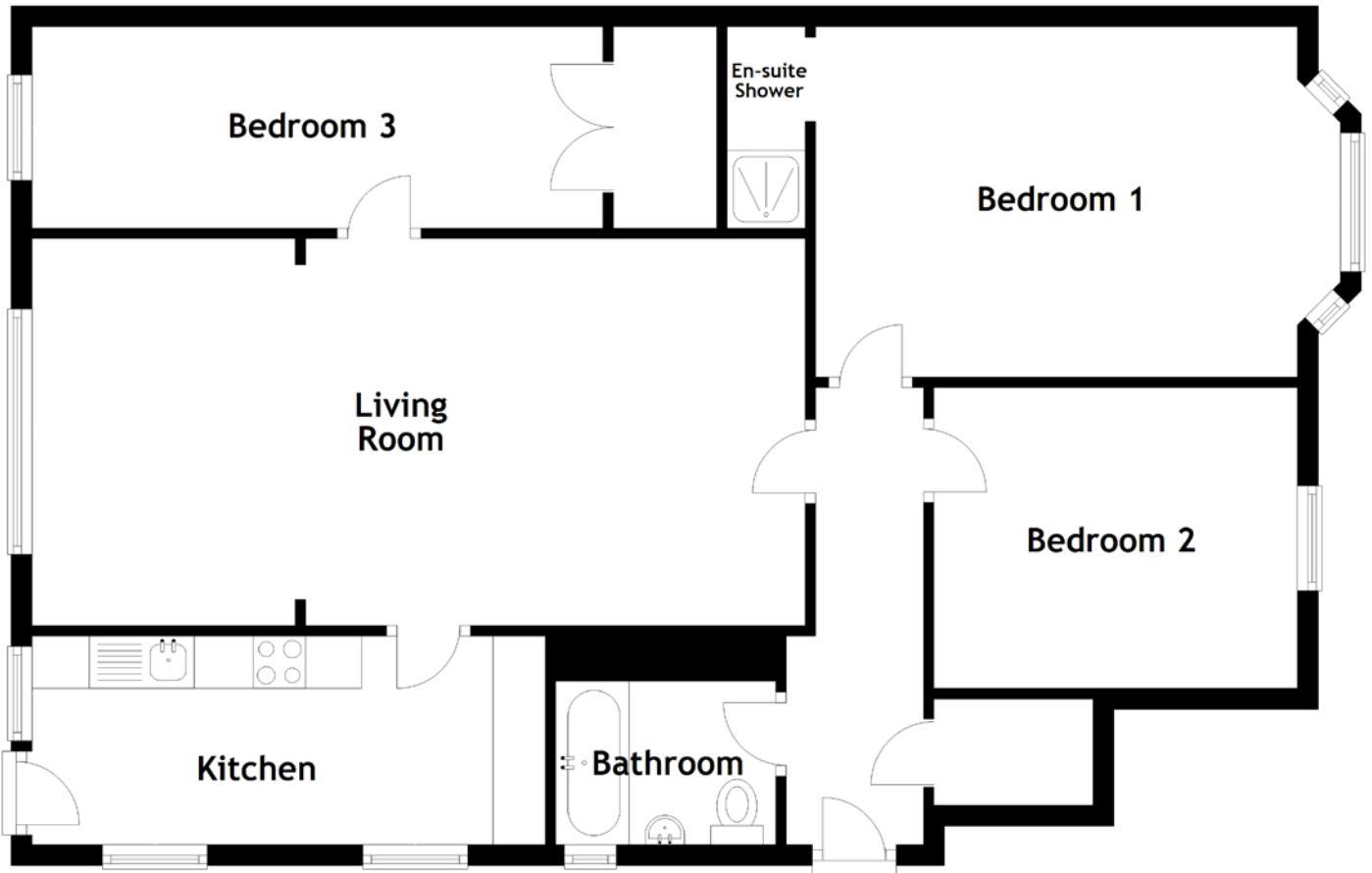


FLOOR PLAN, DIMENSIONS & MAP



Approximate Dimensions (Taken from the widest point)

Living Room	7.38m (24'3") x 3.69m (12'1")
Kitchen	4.90m (16'1") x 1.99m (6'6")
Bathroom	2.10m (6'11") x 1.56m (5'1")
Bedroom 1	5.01m (16'5") x 3.34m (10'11")

En-suite Shower

1.92m (6'4") x 0.74m (2'5")

Bedroom 2

3.47m (11'5") x 2.87m (9'5")

Bedroom 3

5.45m (17'11") x 1.92m (6'4")

Gross internal floor area (m²): 90m²

EPC Rating: C

