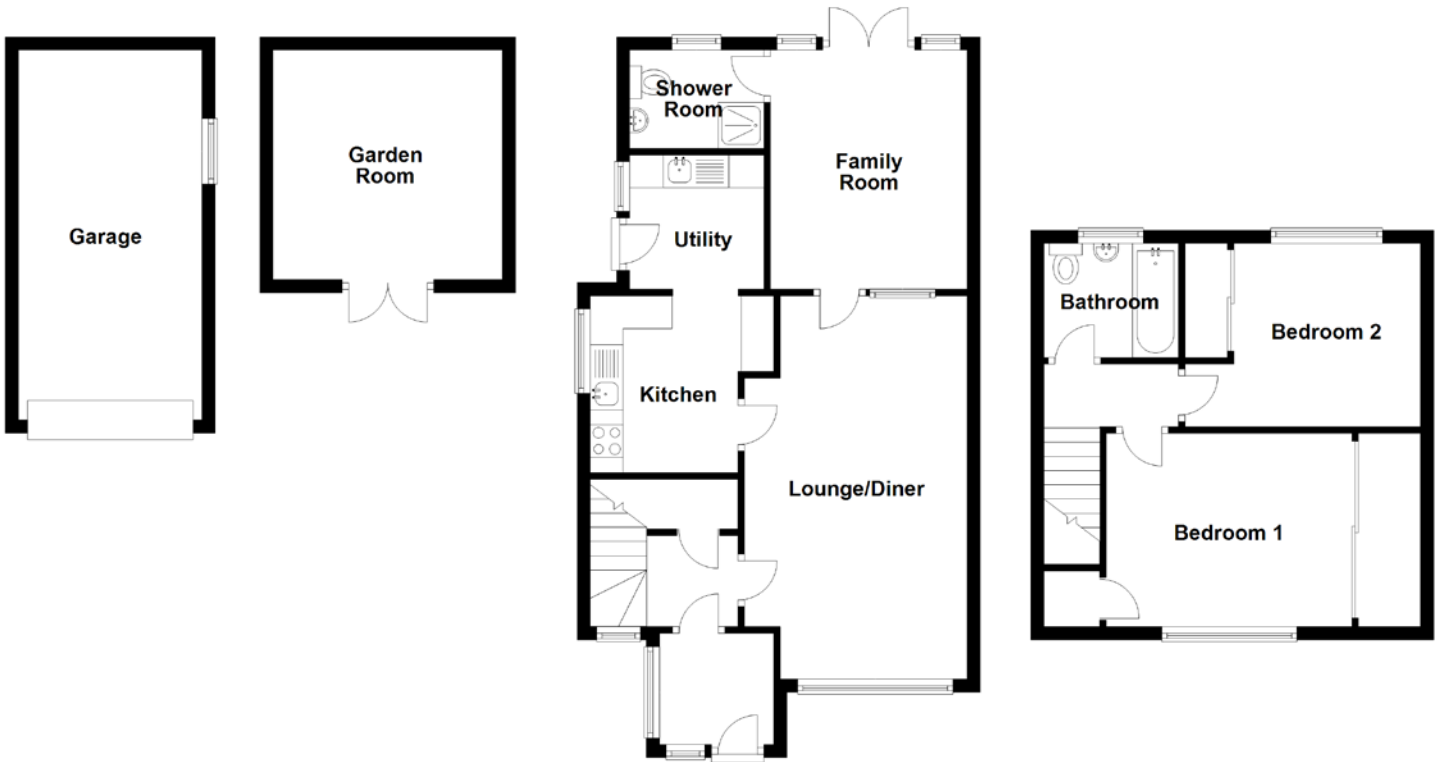


FLOOR PLAN, DIMENSIONS & MAP



Approximate Dimensions (Taken from the widest point)

Lounge/Diner	5.85m (19'2") x 3.40m (11'2")
Family Room	3.65m (12') x 3.00m (9'10")
Shower Room	2.05m (6'9") x 1.50m (4'11")
Kitchen	2.80m (9'2") x 2.70m (8'10")
Utility	2.05m (6'9") x 2.05m (6'9")

Bedroom 1	3.75m (12'4") x 2.95m (9'8")
Bedroom 2	3.60m (11'10") x 2.80m (9'2")
Bathroom	1.85m (6'1") x 1.75m (5'9")
Garage	5.65m (18'6") x 2.80m (9'2")
Garden Room	3.50m (11'6") x 3.50m (11'6")

Gross internal floor area (m²): 91m² | EPC Rating: C

