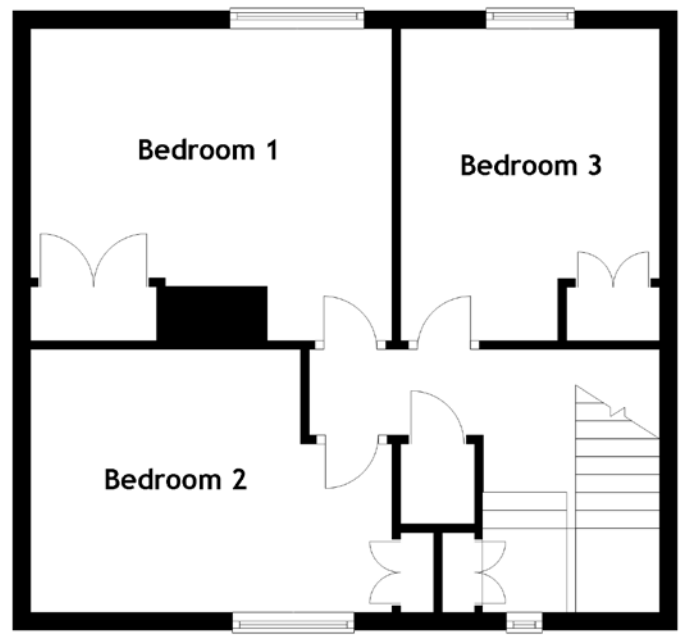
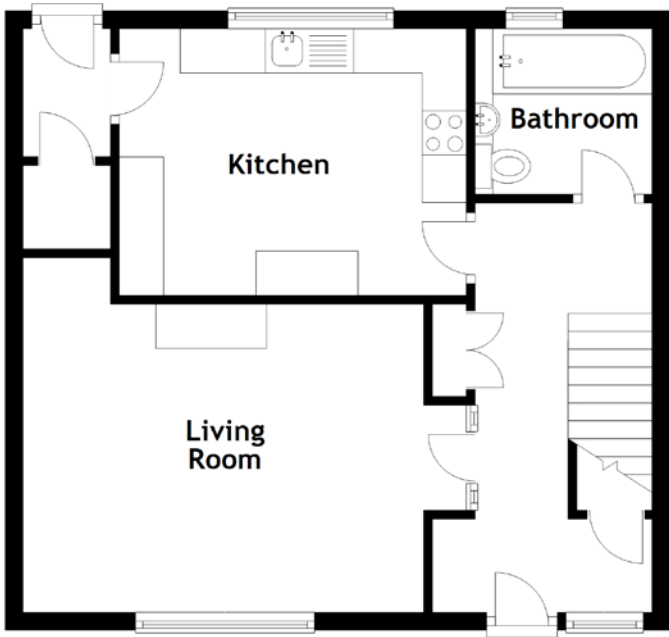


FLOOR PLAN, DIMENSIONS & MAP



Approximate Dimensions
(Taken from the widest point)

Living Room 5.01m (16'5") x 4.00m (13'1")
 Kitchen 3.92m (12'10") x 3.01m (9'11")
 Bathroom 2.00m (6'7") x 1.87m (6'2")

Bedroom 1 4.08m (13'5") x 3.52m (11'7")
 Bedroom 2 4.08m (13'5") x 2.97m (9'9")
 Bedroom 3 3.52m (11'7") x 2.93m (9'7")

Gross internal floor area (m²): 97m²
 EPC Rating: D

