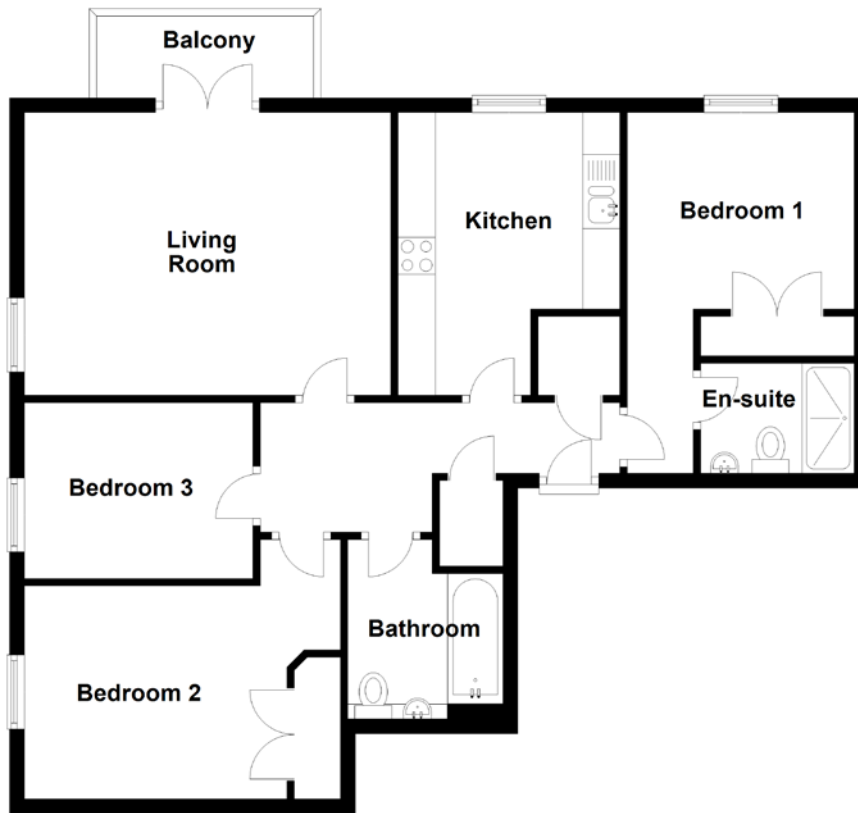


FLOOR PLAN, DIMENSIONS & MAP



Approximate Dimensions (Taken from the widest point)

Living Room 4.94m (16'2") x 3.81m (12'6")
 Kitchen 3.81m (12'6") x 2.99m (9'10")
 Bedroom 1 4.86m (15'11") x 3.06m (10')
 En-suite 2.07m (6'9") x 1.48m (4'10")

Bedroom 2 4.26m (14') x 3.49m (11'6")
 Bedroom 3 3.08m (10'1") x 2.37m (7'9")
 Bathroom 2.42m (7'11") x 2.09m (6'10")

Gross internal floor area (m²): 81m²
 EPC Rating: C

