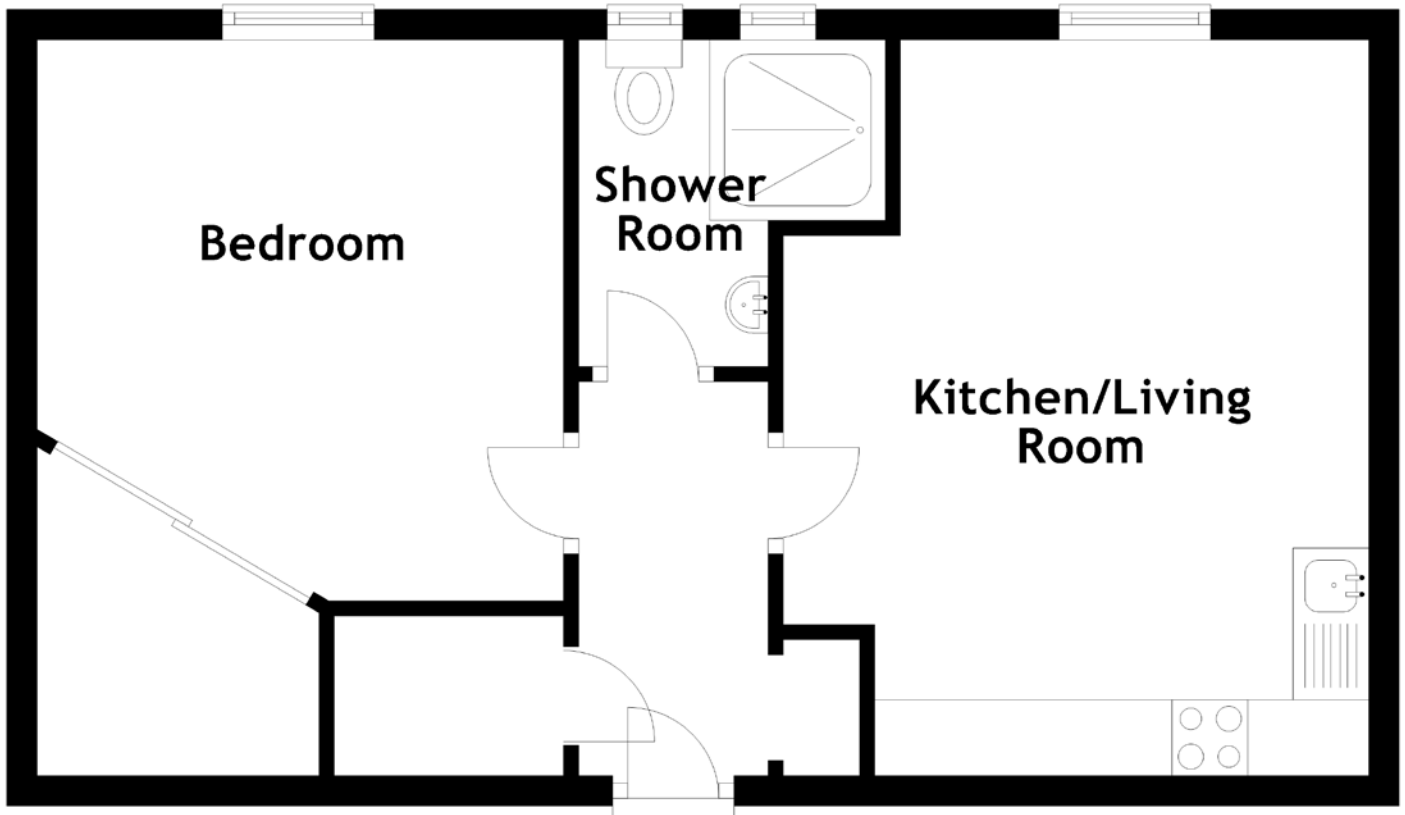


FLOOR PLAN, DIMENSIONS & MAP



Approximate Dimensions (Taken from the widest point)

Kitchen/Living Room	4.85m (15'11") x 3.86m (12'8")	Gross internal floor area (m ²): 49m ²
Shower Room	2.15m (7'1") x 2.02m (6'8")	
Bedroom	3.70m (12'2") x 3.47m (11'5")	EPC Rating: E

