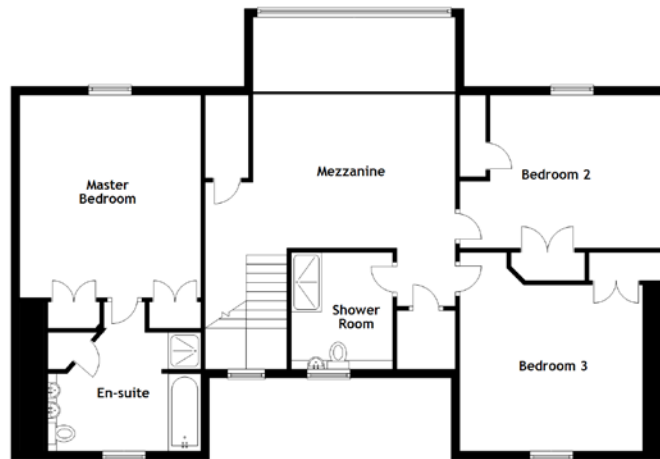
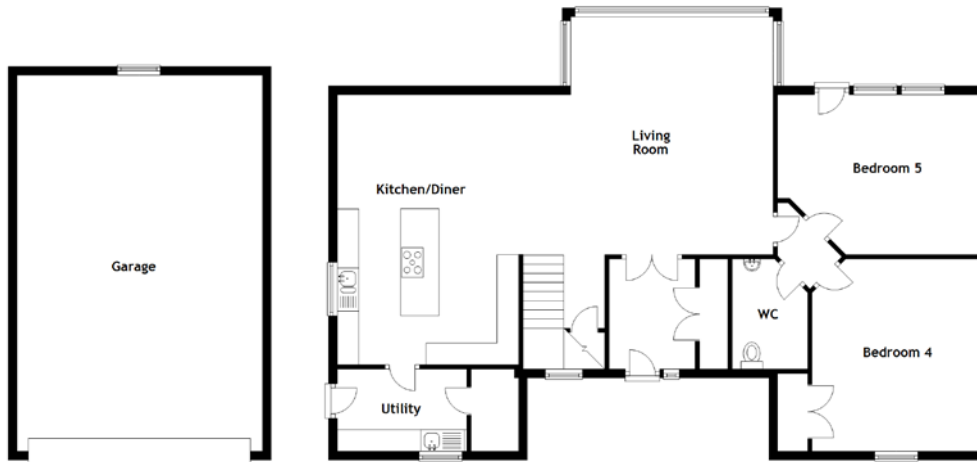


FLOOR PLAN, DIMENSIONS & MAP



Approximate Dimensions (Taken from the widest point)

Living Room	5.80m (19'1") x 5.50m (18'1")
Kitchen/Diner	6.25m (20'6") x 4.20m (13'10")
Utility	3.00m (9'10") x 1.90m (6'3")
WC	2.55m (8'4") x 1.75m (5'9")
Bedroom 4	4.45m (14'7") x 3.90m (12'10")
Bedroom 5	4.70m (15'5") x 3.70m (12'2")
Mezzanine	5.80m (19'1") x 4.90m (16'1")

Master Bedroom	4.70m (15'5") x 4.20m (13'10")
En-suite	3.55m (11'8") x 3.55m (11'8")
Bedroom 2	4.70m (15'5") x 3.55m (11'8")
Bedroom 3	4.60m (15'1") x 4.25m (13'11")
Shower Room	2.70m (8'10") x 2.35m (7'8")
Garage	8.70m (28'7") x 5.70m (18'8")

Gross internal floor area (m²): 215m²
EPC Rating: B

