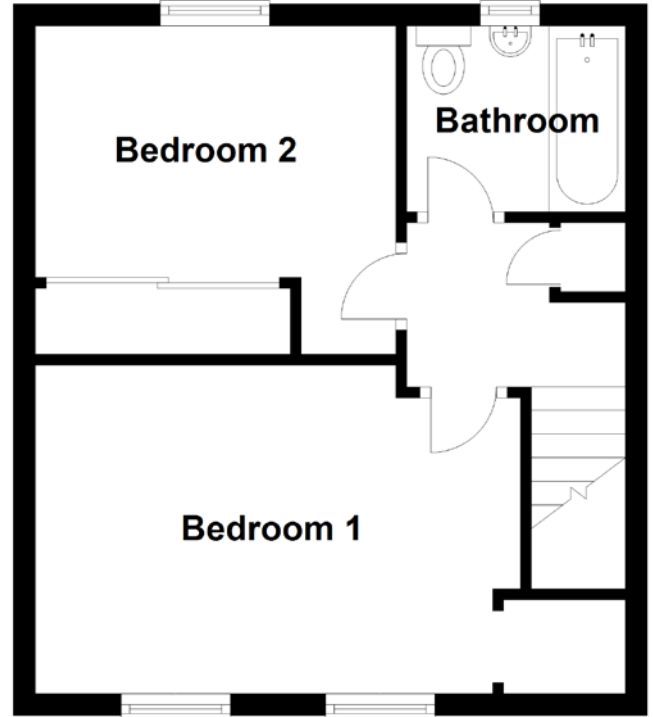
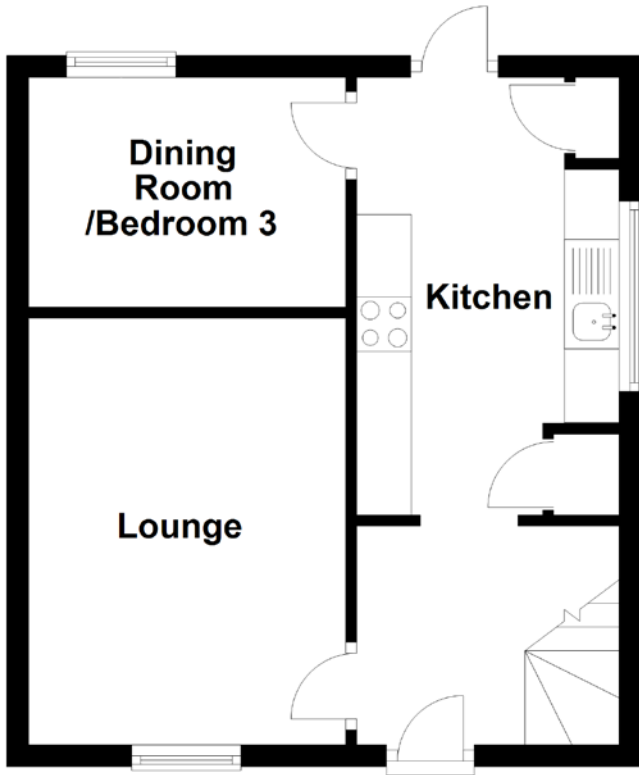


FLOOR PLAN, DIMENSIONS & MAP



Approximate Dimensions
(Taken from the widest point)

Lounge 3.90m (12'10") x 2.90m (9'6")
 Dining Room/Bedroom 3 2.90m (9'6") x 2.10m (6'11")
 Kitchen 4.00m (13'1") x 2.40m (7'10")

Bathroom 2.00m (6'7") x 1.70m (5'7")
 Bedroom 1 4.44m (14'7") x 3.00m (9'10")
 Bedroom 2 3.30m (10'10") x 3.00m (9'10")

Gross internal floor area (m²): 67m²
 EPC Rating: C

