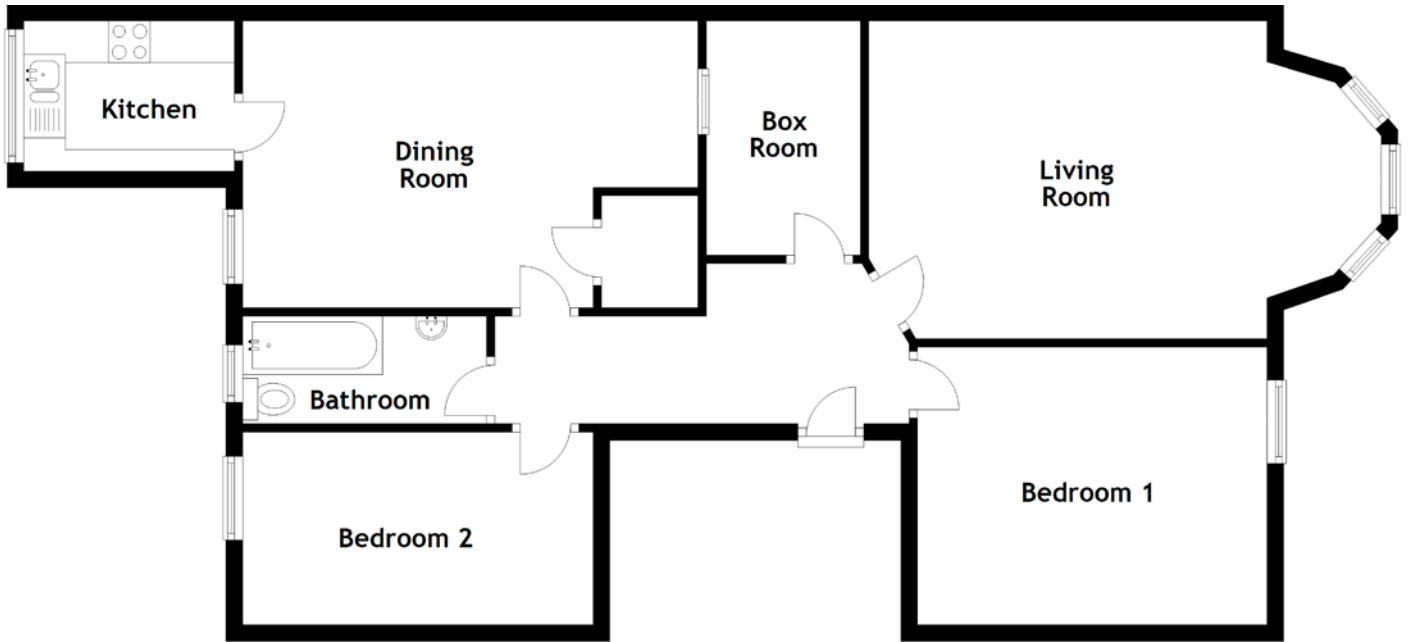


FLOOR PLAN, DIMENSIONS & MAP



Approximate Dimensions (Taken from the widest point)

Living Room 6.16m (20'3") x 3.81m (12'6")
 Dining Room 5.47m (17'11") x 3.44m (11'3")
 Kitchen 2.53m (8'4") x 1.80m (5'11")
 Bathroom 2.93m (9'7") x 1.29m (4'3")

Bedroom 1 4.20m (13'9") x 3.33m (10'11")
 Bedroom 2 4.21m (13'10") x 2.30m (7'7")
 Box Room 2.83m (9'3") x 1.85m (6'1")

Gross internal floor area (m²): 93m²
 EPC Rating: E

