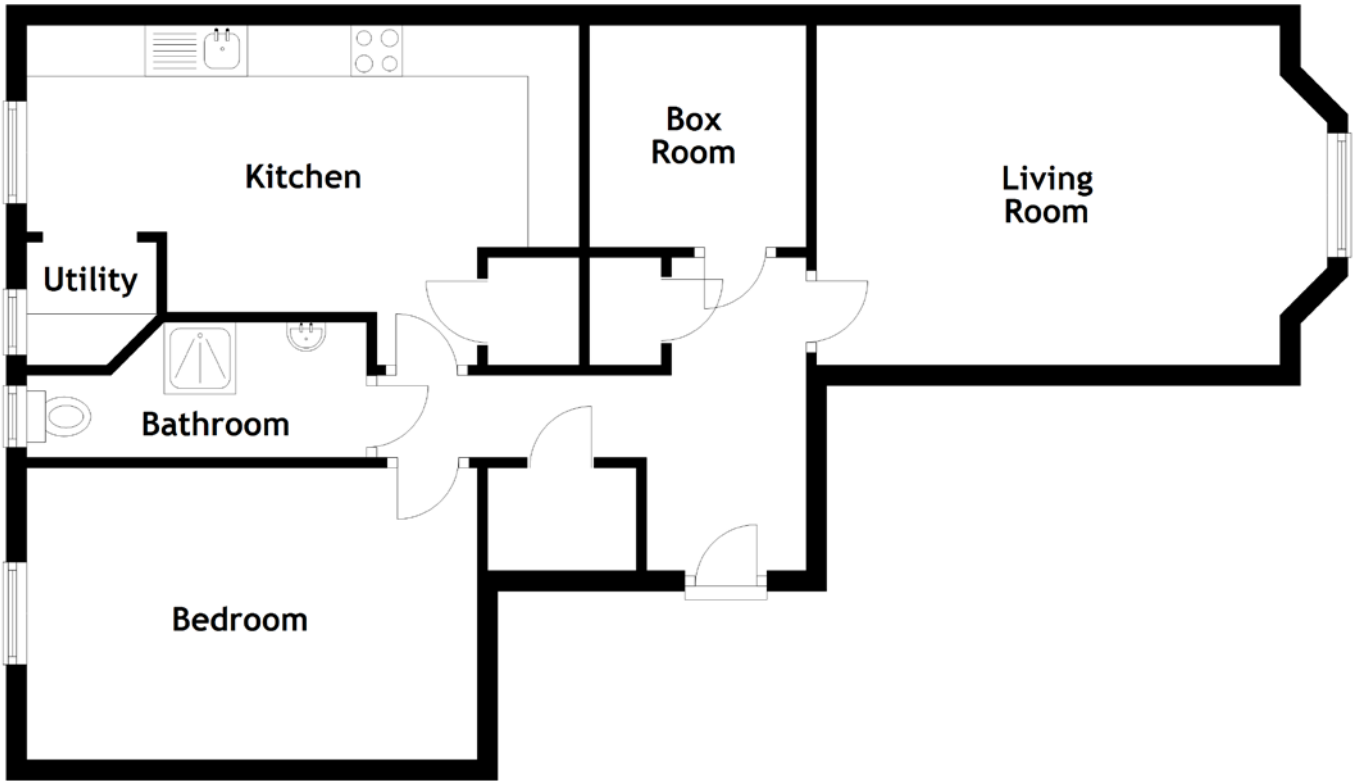


FLOOR PLAN, DIMENSIONS & MAP



Approximate Dimensions
(Taken from the widest point)

Living Room 4.99m (16'4") x 3.32m (10'11")
 Kitchen 5.40m (17'8") x 3.32m (10'11")
 Utility 1.27m (4'2") x 1.20m (3'11")

Box Room 2.17m (7'1") x 2.12m (6'11")
 Bedroom 4.40m (14'5") x 2.85m (9'4")
 Bathroom 3.32m (10'11") x 1.32m (4'4")

Gross internal floor area (m²): 67m²
 EPC Rating: C

