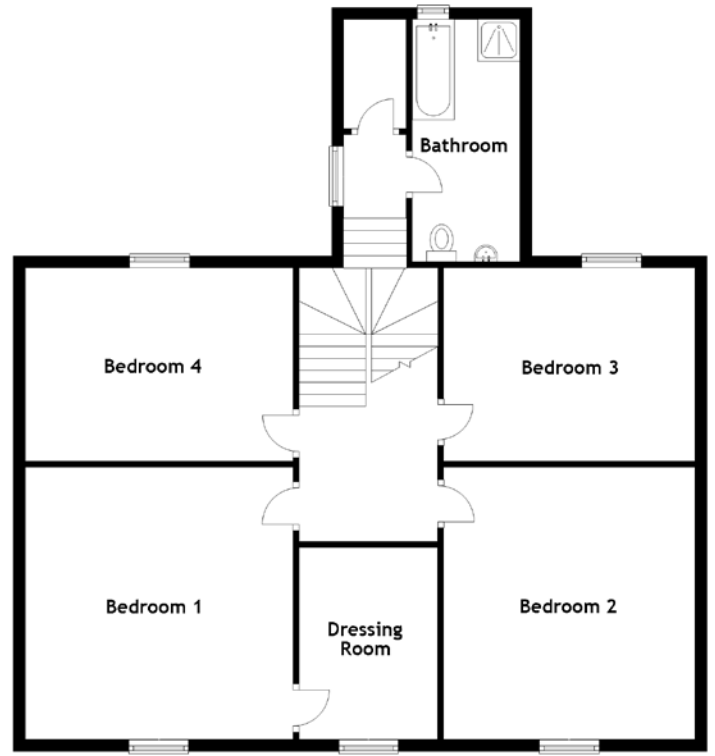
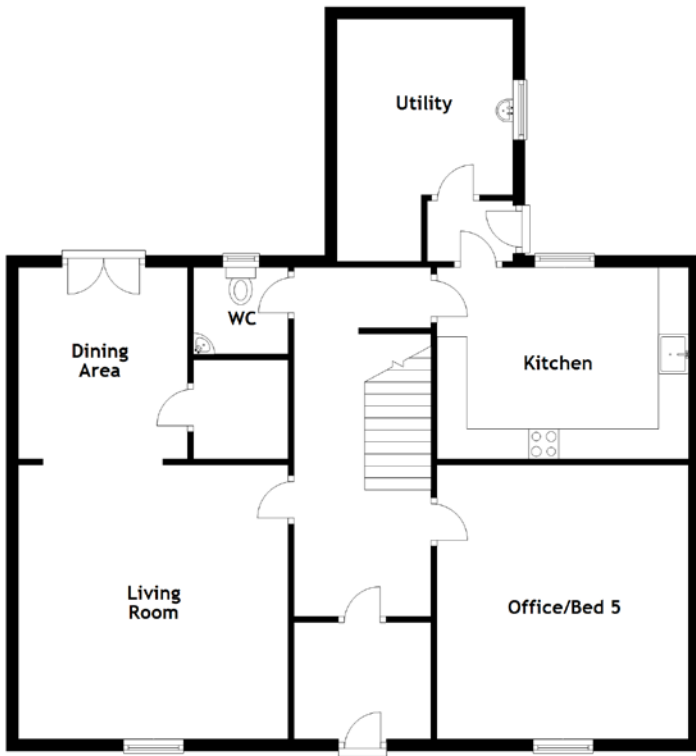


FLOOR PLAN, DIMENSIONS & MAP



Approximate Dimensions
(Taken from the widest point)

Living Room	4.58m (15') x 4.51m (14'10")
Dining Area	3.20m (10'6") x 2.83m (9'3")
Office/Bed 5	4.58m (15') x 4.20m (13'9")
Kitchen	4.20m (13'9") x 3.20m (10'6")
Utility	4.05m (13'3") x 2.95m (9'8")
WC	1.58m (5'2") x 1.45m (4'9")

Bedroom 1	4.55m (14'11") x 4.48m (14'8")
Dressing Room	3.21m (10'6") x 2.35m (7'9")
Bedroom 2	4.55m (14'11") x 4.20m (13'9")
Bedroom 3	4.20m (13'9") x 3.23m (10'7")
Bedroom 4	4.48m (14'8") x 3.23m (10'7")
Bathroom	4.05m (13'3") x 1.80m (5'11")

Gross internal floor area (m²): 204m²
EPC Rating: D

