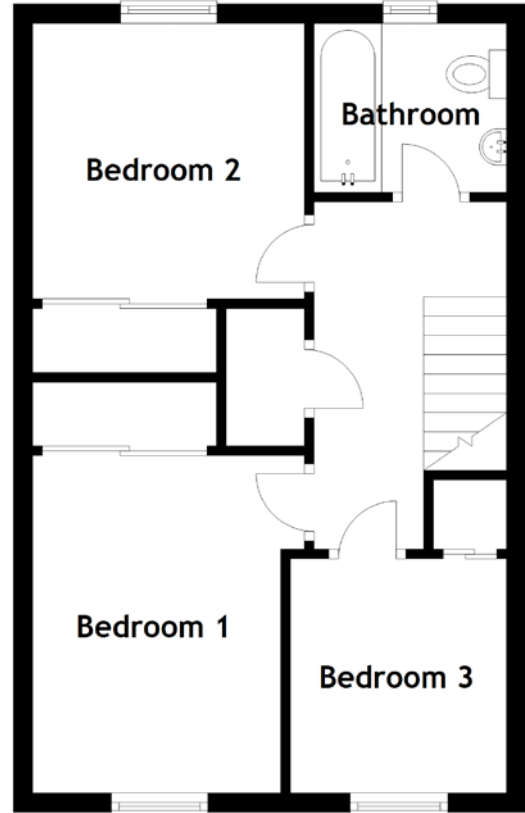
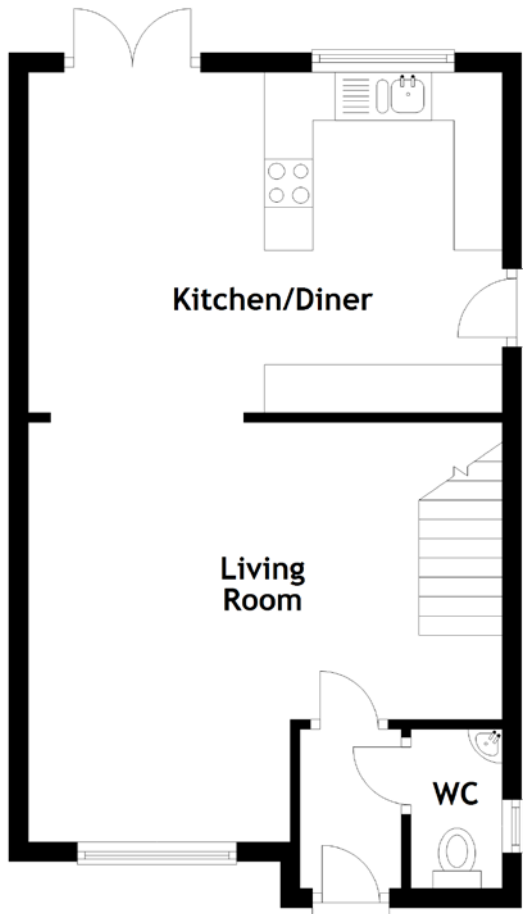


FLOOR PLAN, DIMENSIONS & MAP



Approximate Dimensions (Taken from the widest point)

Living Room	4.91m (16'1") x 4.35m (14'3")
Kitchen/Diner	4.91m (16'1") x 3.53m (11'7")
WC	1.65m (5'5") x 0.95m (3'1")
Bathroom	2.00m (6'7") x 1.75m (5'9")

Bedroom 1	3.50m (11'6") x 2.00m (6'7")
Bedroom 2	2.86m (9'5") x 2.82m (9'3")
Bedroom 3	2.43m (8') x 2.10m (6'11")

Gross internal floor area (m²): 80m²
EPC Rating: C

