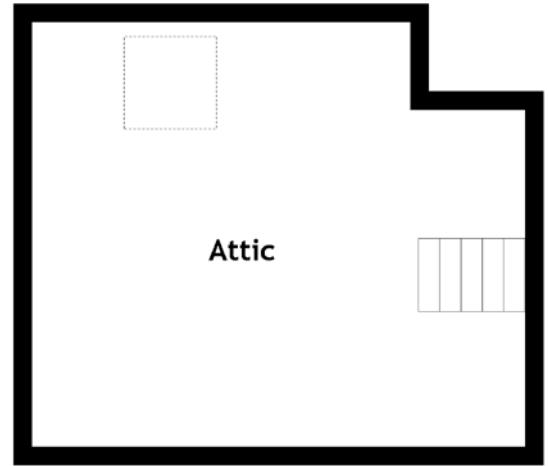
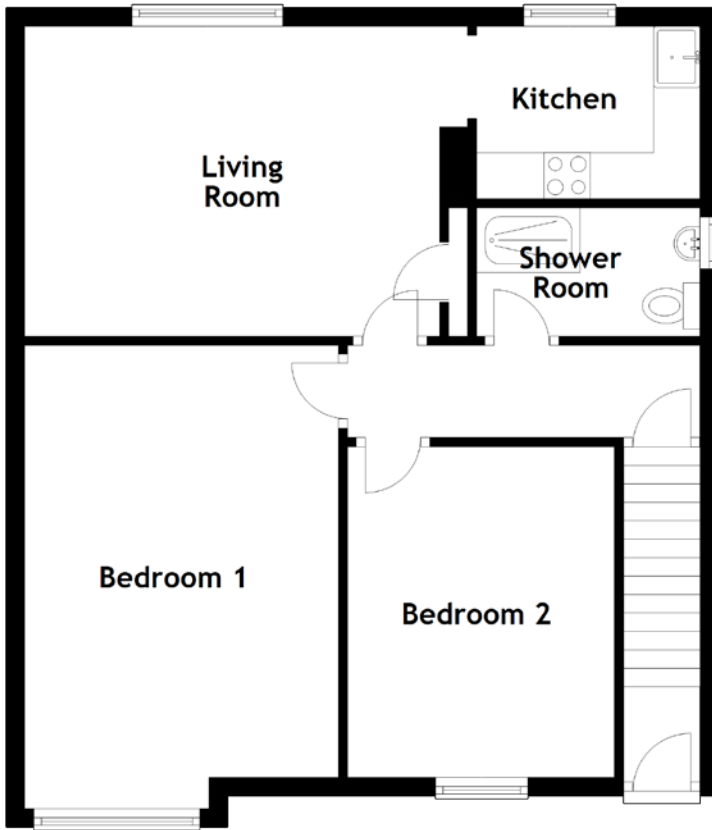


FLOOR PLAN, DIMENSIONS & MAP



Approximate Dimensions
(Taken from the widest point)

Living Room	4.80m (15'9") x 3.36m (11')
Kitchen	2.42m (7'11") x 1.87m (6'2")
Shower Room	2.42m (7'11") x 1.39m (4'7")

Bedroom 1	5.02m (16'6") x 3.40m (11'2")
Bedroom 2	3.58m (11'9") x 2.89m (9'6")
Attic	5.34m (17'6") x 4.60m (15'1")

Gross internal floor area (m²): 63m²
EPC Rating: C

