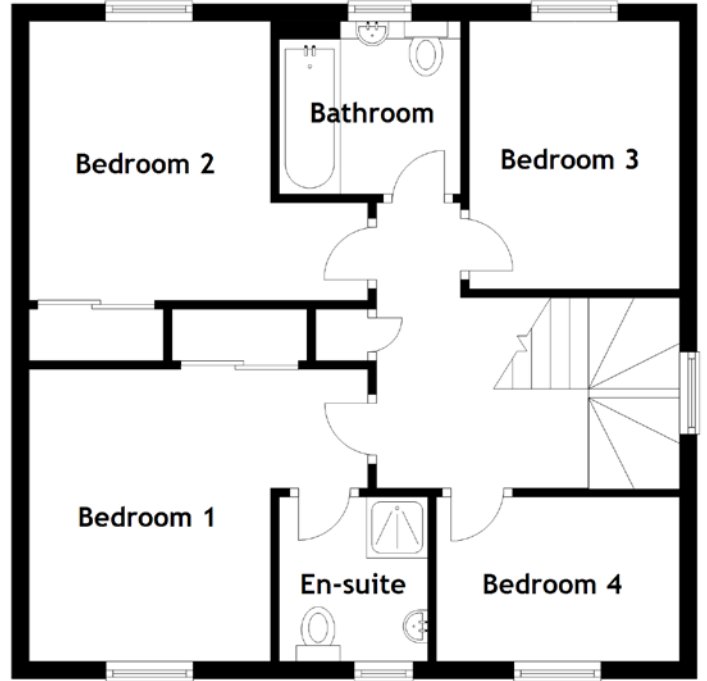
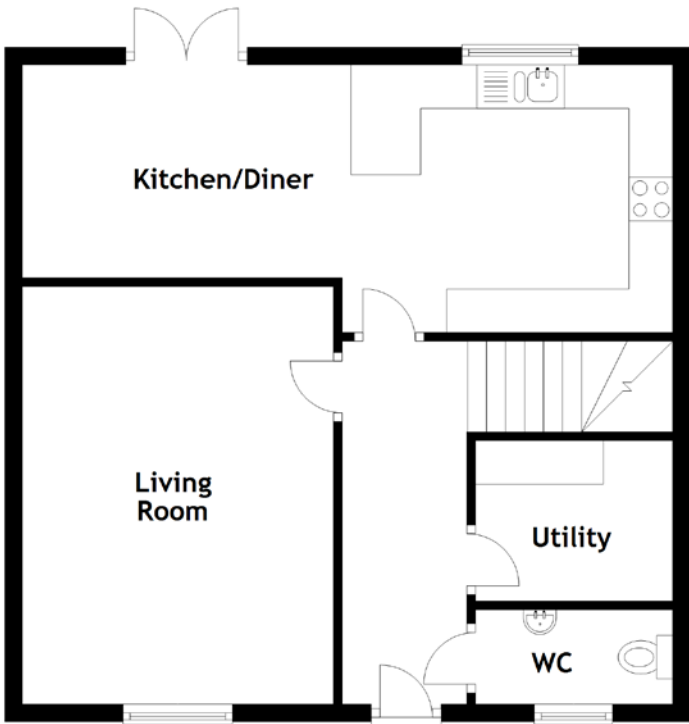


# FLOOR PLAN, DIMENSIONS & MAP



Approximate Dimensions (Taken from the widest point)

Living Room	4.79m (15'9") x 3.57m (11'9")
Kitchen/Diner	7.46m (24'6") x 3.07m (10'1")
Utility	2.26m (7'5") x 1.84m (6')
WC	2.26m (7'5") x 1.08m (3'7")
Bedroom 1	3.94m (12'11") x 3.34m (11')

En-suite	1.88m (6'2") x 1.70m (5'7")
Bedroom 2	3.89m (12'9") x 3.20m (10'6")
Bedroom 3	3.07m (10'1") x 2.41m (7'11")
Bedroom 4	2.79m (9'2") x 1.88m (6'2")
Bathroom	2.08m (6'10") x 1.98m (6'6")

Gross internal floor area (m<sup>2</sup>): 110m<sup>2</sup> | EPC Rating: B

