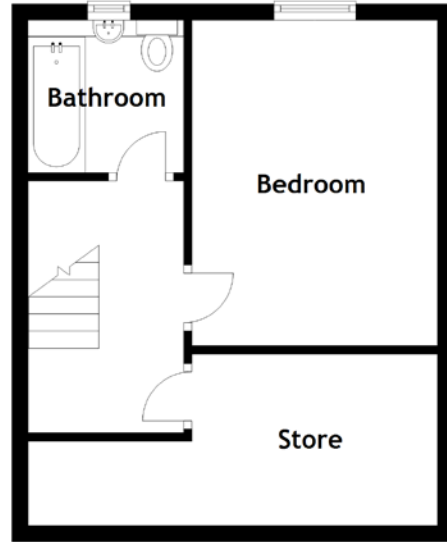
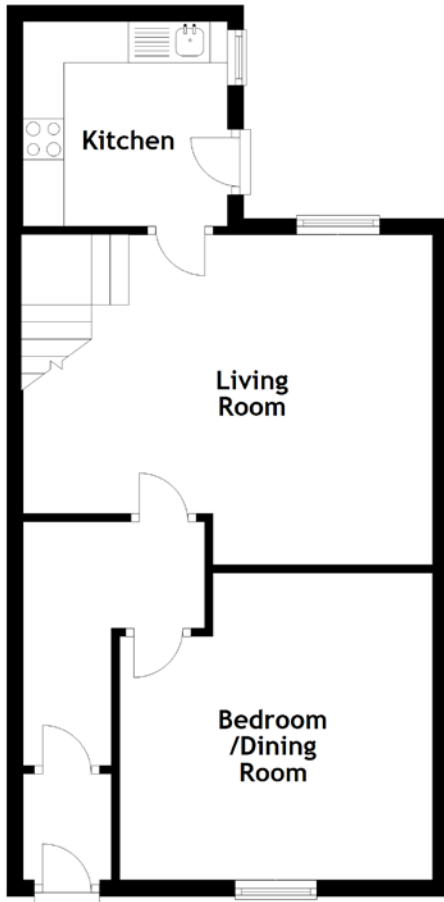


FLOOR PLAN, DIMENSIONS & MAP



Approximate Dimensions (Taken from the widest point)

Living Room	5.01m (16'5") x 4.04m (13'3")
Kitchen	2.50m (8'2") x 2.50m (8'2")
Bedroom/Dining Room	3.83m (12'7") x 3.75m (12'4")

Bathroom	1.90m (6'3") x 1.86m (6'1")
Bedroom	3.98m (13'1") x 2.78m (9'1")
Store	4.90m (16'1") x 2.10m (6'11")

Gross internal floor area (m²): 73m² | EPC Rating: D

