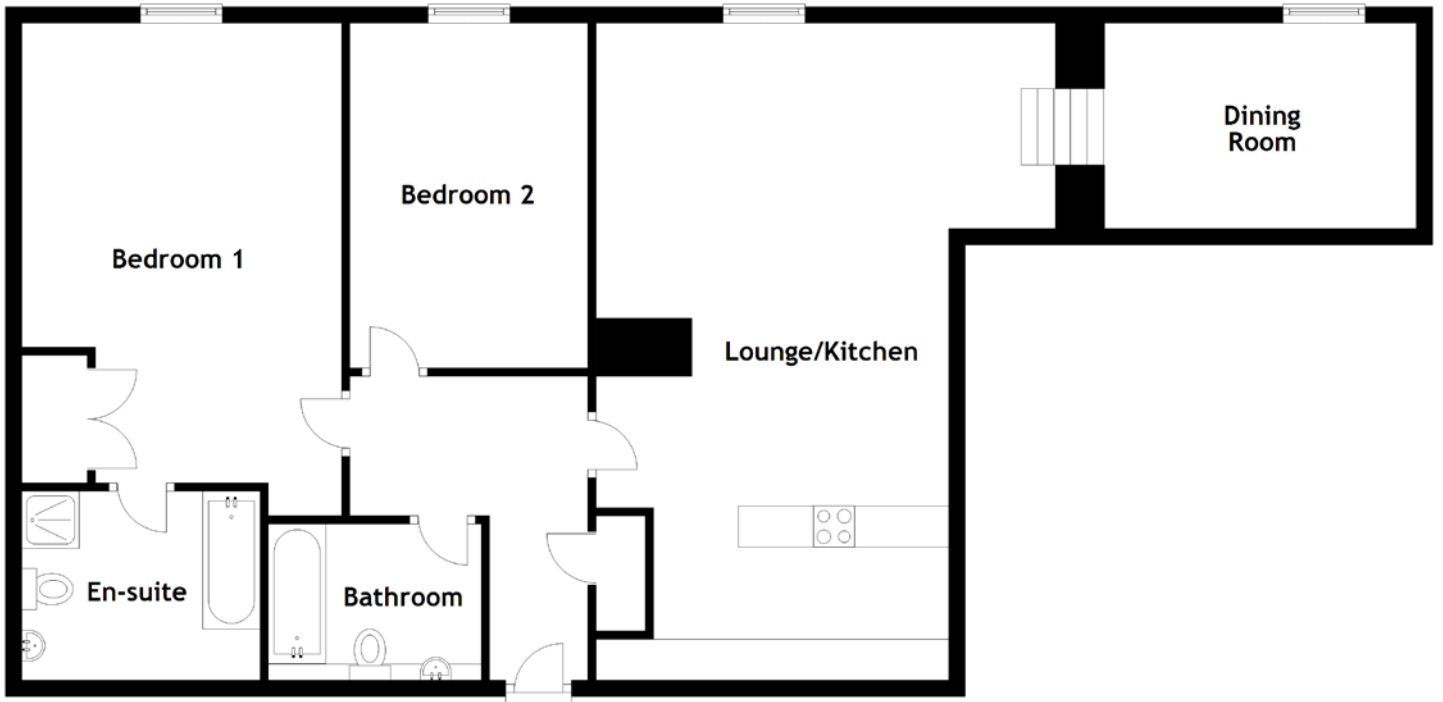


# FLOOR PLAN, DIMENSIONS & MAP



Approximate Dimensions (Taken from the widest point)

Bedroom 1 6.00m (19'8") x 3.90m (12'10")  
 Bedroom 2 4.20m (13'9") x 2.90m (9'6")  
 Lounge/Kitchen 7.80m (25'7") x 5.60m (18'4")  
 Bathroom 2.60m (8'6") x 1.91m (6'3")

En-suite

2.80m (9'2") x 2.30m (7'7")

Dining Room

3.80m (12'6") x 2.50m (8'3")

Gross internal floor area (m<sup>2</sup>): 105m<sup>2</sup>

EPC Rating: C

