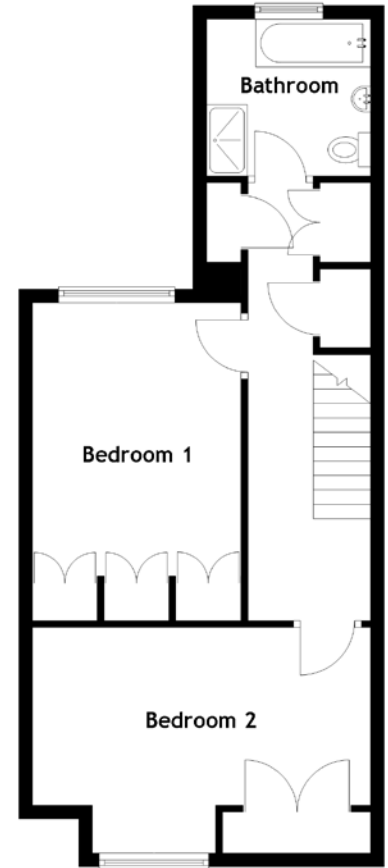
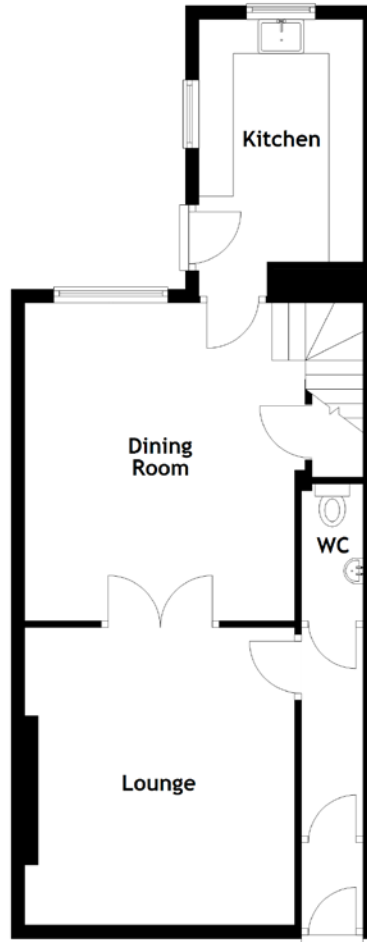
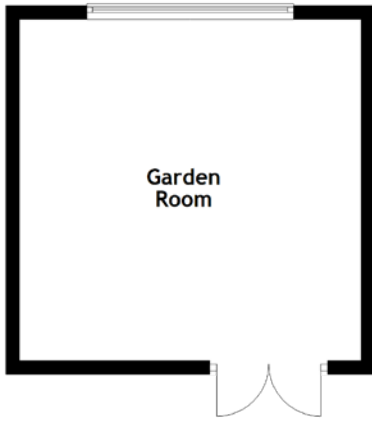


FLOOR PLAN, DIMENSIONS & MAP



Approximate Dimensions
(Taken from the widest point)

Lounge	4.35m (14'3") x 3.95m (13')
Dining Room	4.65m (15'3") x 4.05m (13'3")
Kitchen	3.55m (11'8") x 2.40m (7'10")
WC	2.00m (6'7") x 0.90m (2'11")

Bathroom	2.45m (8') x 2.30m (7'6")
Bedroom 1	4.00m (13'1") x 3.05m (10')
Bedroom 2	5.25m (17'3") x 3.30m (10'10")
Garden Room	5.00m (16'5") x 5.00m (16'5")

Gross internal floor area (m²): 110m²
EPC Rating: E

