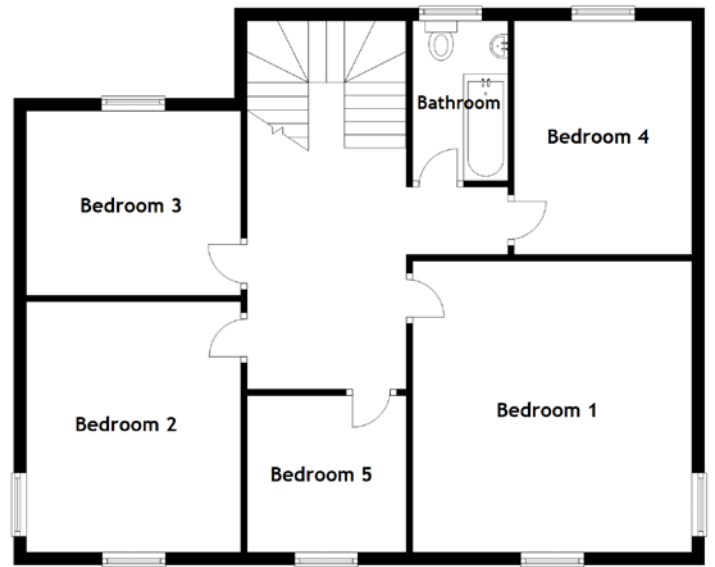
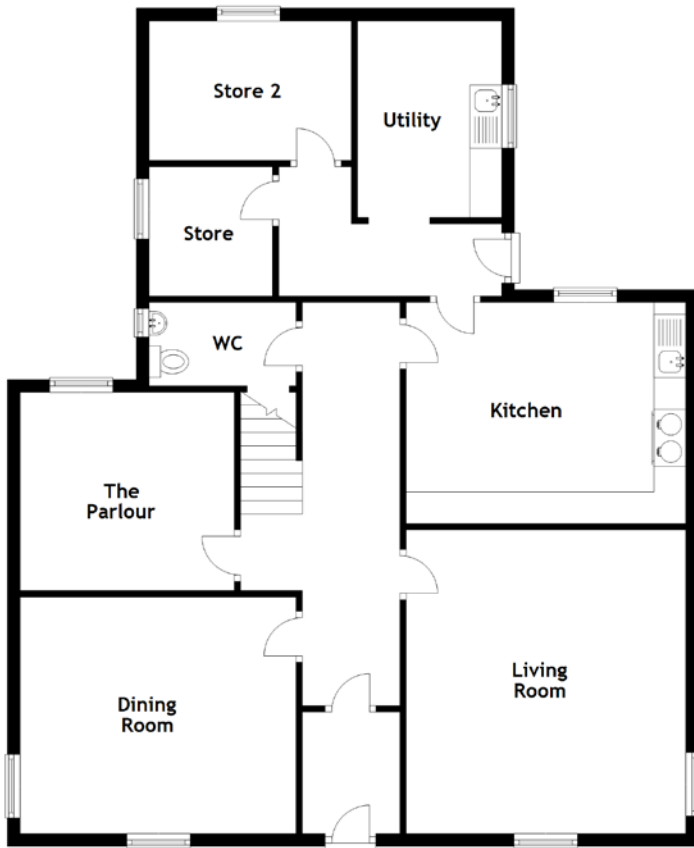


FLOOR PLAN, DIMENSIONS & MAP



Approximate Dimensions
(Taken from the widest point)

Living Room	4.79m (15'9") x 4.41m (14'6")
Dining Room	4.35m (14'3") x 3.73m (12'3")
The Parlour	3.38m (11'1") x 3.13m (10'3")
Kitchen	4.41m (14'6") x 3.49m (11'5")
Utility	3.10m (10'2") x 2.27m (7'6")
WC	2.32m (7'7") x 1.32m (4'4")
Store	2.04m (6'8") x 1.95m (6'5")

Store 2	3.19m (10'6") x 2.20m (7'3")
Bathroom	2.52m (8'3") x 1.50m (4'11")
Bedroom 1	4.56m (15') x 4.35m (14'3")
Bedroom 2	3.95m (13') x 3.59m (11'9")
Bedroom 3	3.59m (11'9") x 2.95m (9'8")
Bedroom 4	3.69m (12'1") x 2.74m (9')
Bedroom 5	2.47m (8'1") x 2.35m (7'9")

Gross internal floor area (m²): 199m²
EPC Rating: F

