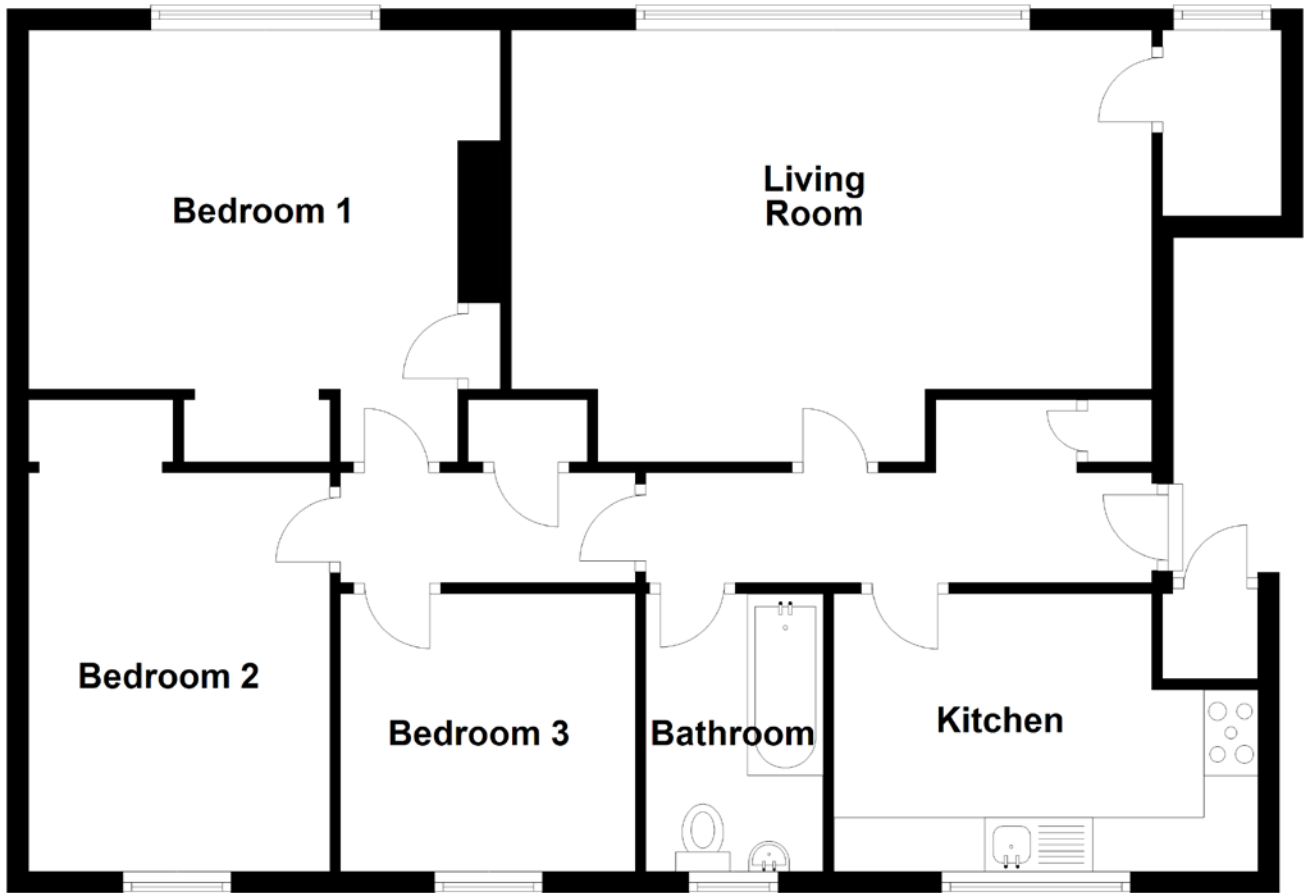


FLOOR PLAN, DIMENSIONS & MAP



Approximate Dimensions (Taken from the widest point)

Living Room 5.94m (19'6") x 4.00m (13'1")
 Kitchen 3.93m (12'11") x 2.57m (8'5")
 Bathroom 2.64m (8'8") x 2.57m (8'5")

Bedroom 1 4.00m (13'1") x 2.89m (9'6")
 Bedroom 2 3.69m (12'1") x 2.79m (9'2")
 Bedroom 3 2.73m (8'11") x 2.57m (8'5")

Gross internal floor area (m²): 84m² | EPC Rating: C

