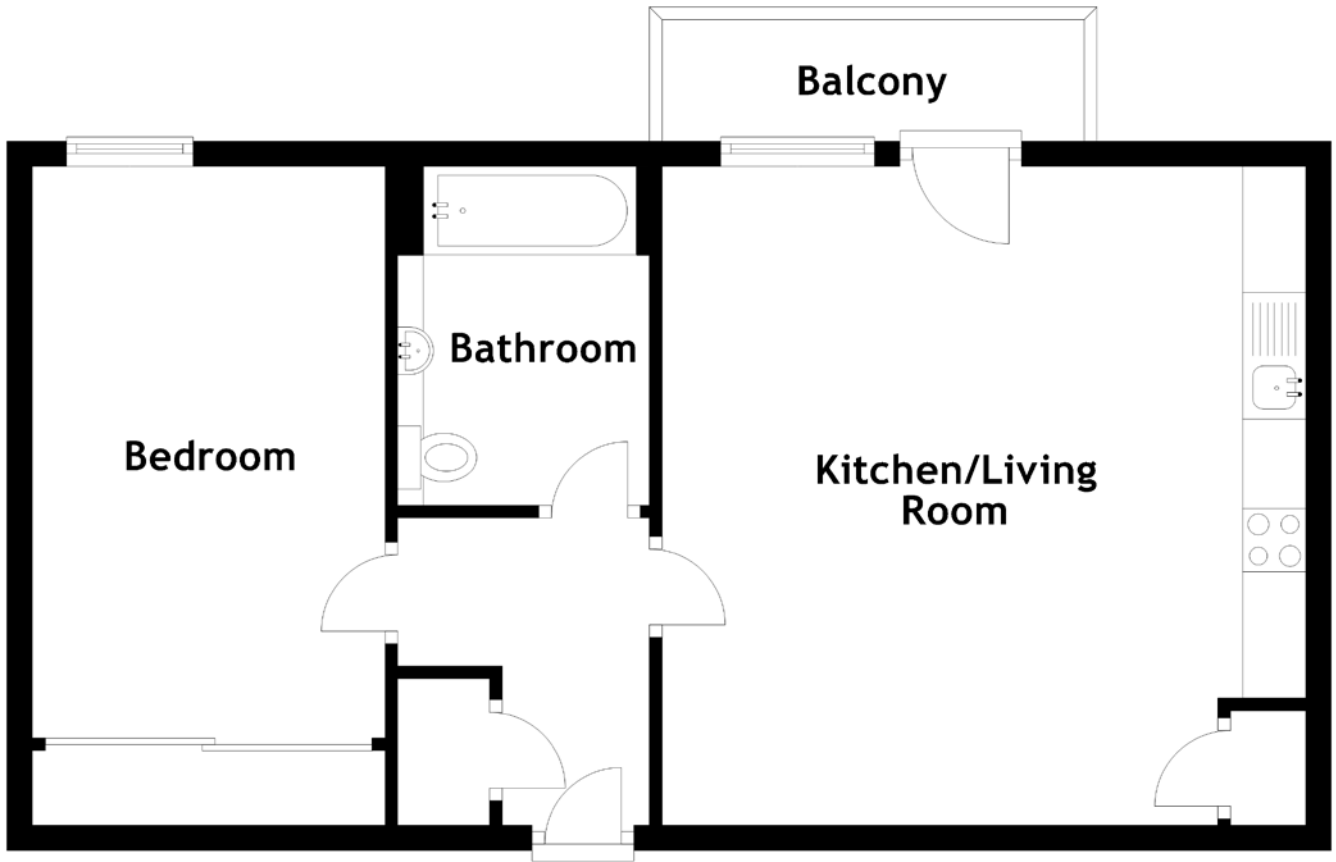


FLOOR PLAN, DIMENSIONS & MAP



Approximate Dimensions (Taken from the widest point)

Kitchen/Living Room 5.21m (17'1") x 5.09m (16'8")
Bathroom 2.68m (8'10") x 1.99m (6'6")
Bedroom 4.52m (14'10") x 2.79m (9'2")

Gross internal floor area (m²): 53m²
EPC Rating: B

