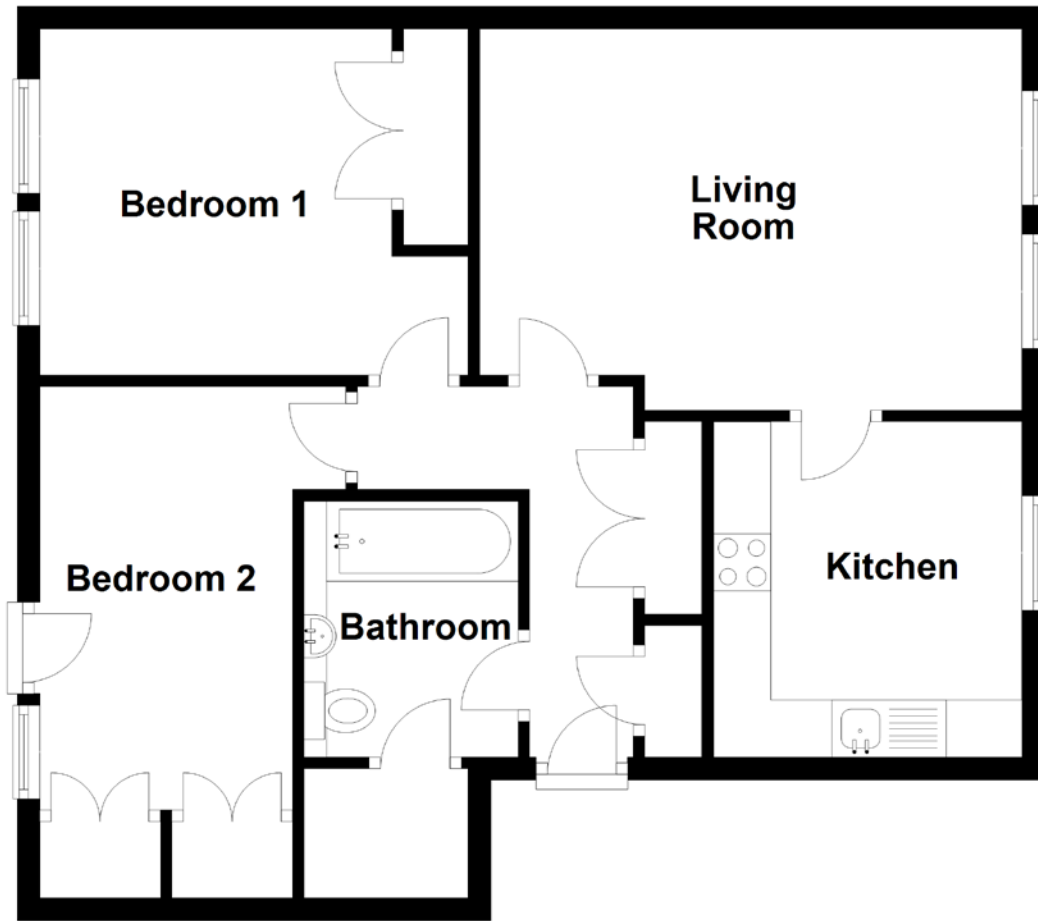


FLOOR PLAN, DIMENSIONS & MAP



Approximate Dimensions
(Taken from the widest point)

Living Room 4.75m (15'7") x 3.34m (10'11")
Kitchen 2.70m (8'10") x 2.69m (8'10")

Bedroom 1 3.75m (12'4") x 3.03m (9'11")
Bedroom 2 3.71m (12'2") x 2.68m (8'10")
Bathroom 2.24m (7'4") x 1.88m (6'2")

Gross internal floor area (m²): 60m² | EPC Rating: C

