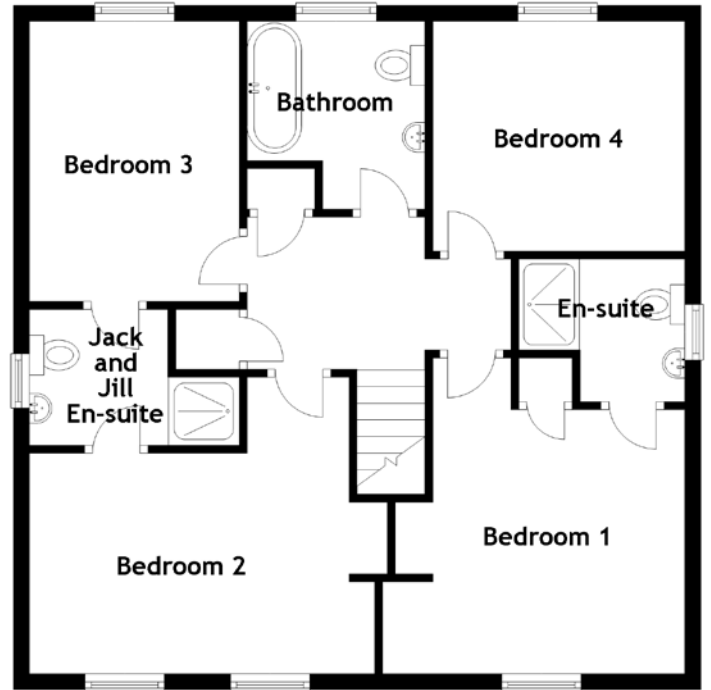
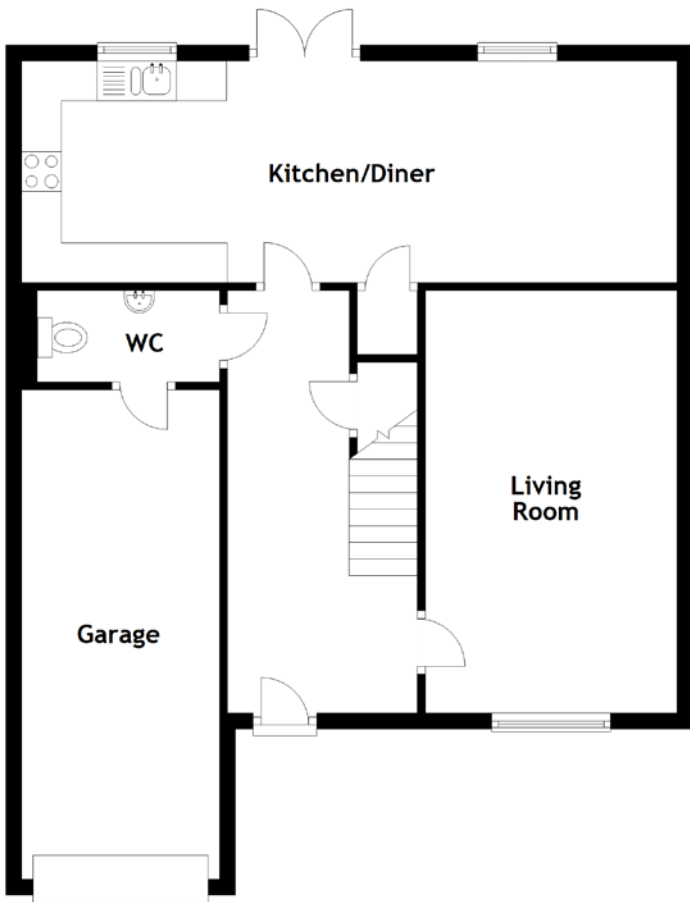


FLOOR PLAN, DIMENSIONS & MAP



[CLICK HERE FOR
VIRTUAL TOUR](#)

Approximate Dimensions (Taken from the widest point)

Living Room	5.32m (17'5") x 3.17m (10'5")
Kitchen/Diner	8.25m (27'1") x 2.79m (9'2")
WC	2.25m (7'5") x 1.15m (3'9")
Bathroom	2.36m (7'9") x 2.24m (7'4")
Bedroom 1	3.98m (13'1") x 3.81m (12'6")
En-suite	2.09m (6'10") x 1.80m (5'11")

Bedroom 2	4.35m (14'3") x 3.78m (12'5")
Jack and Jill En-suite	2.64m (8'8") x 1.71m (5'7")
Bedroom 3	3.52m (11'7") x 2.64m (8'8")
Bedroom 4	3.17m (10'5") x 2.89m (9'6")
Garage	6.16m (20'3") x 2.49m (8'2")

Gross internal floor area (m²): 125m²
EPC Rating: B

