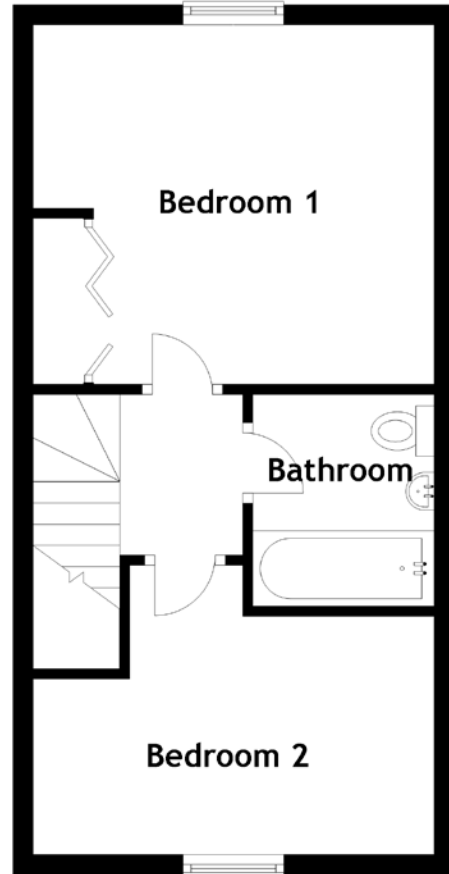
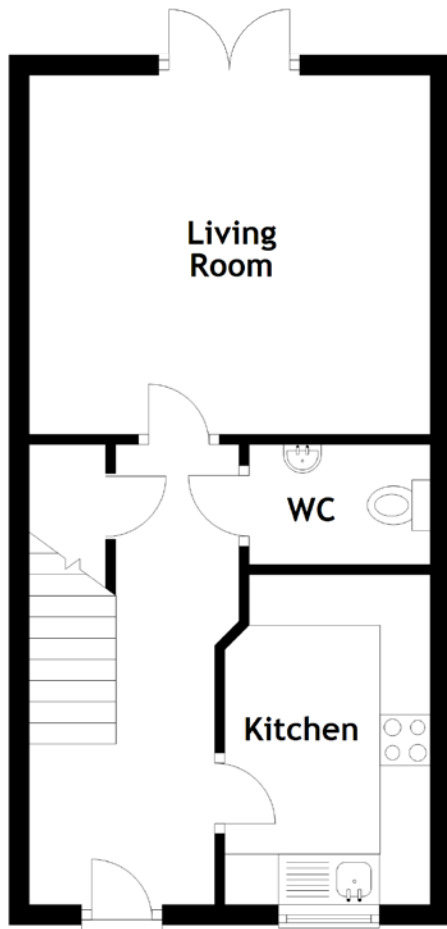


# FLOOR PLAN, DIMENSIONS & MAP



Approximate Dimensions  
(Taken from the widest point)

Living Room	3.98m (13'1") x 3.56m (11'8")
Kitchen	3.27m (10'9") x 2.04m (6'8")
WC	1.80m (5'11") x 1.19m (3'11")

Bathroom	2.10m (6'11") x 1.79m (5'10")
Bedroom 1	3.98m (13'1") x 3.56m (11'8")
Bedroom 2	3.98m (13'1") x 2.87m (9'5")

Gross internal floor area (m<sup>2</sup>): 66m<sup>2</sup>  
EPC Rating: C

