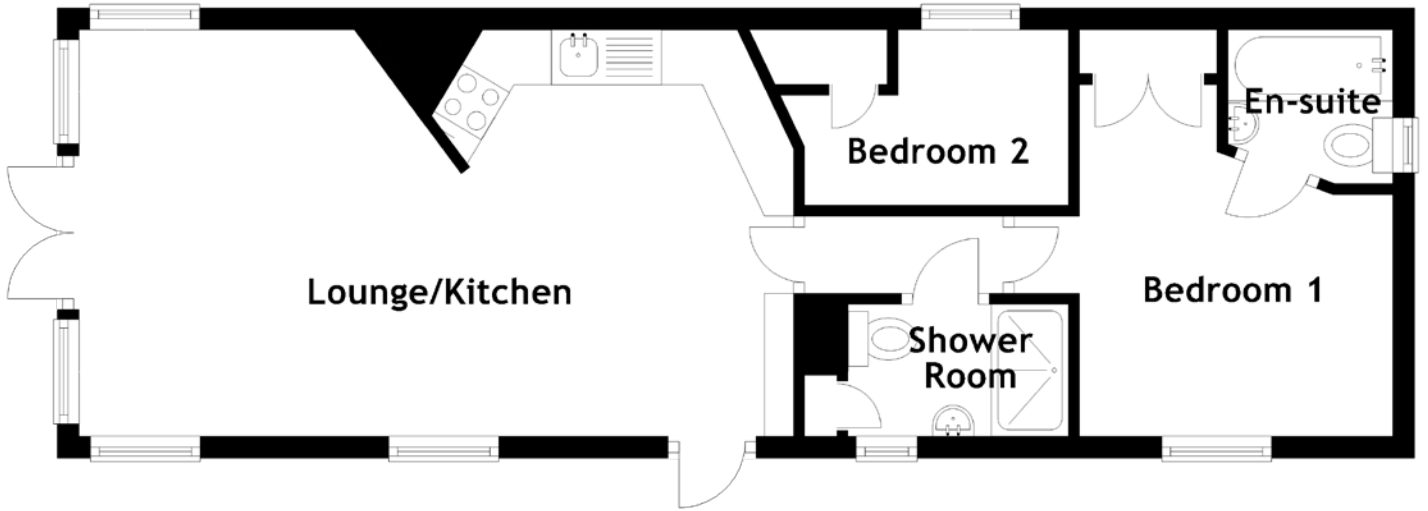


# FLOOR PLAN, DIMENSIONS & MAP



Approximate Dimensions  
(Taken from the widest point)

Lounge/Kitchen

6.50m (21'4") x 3.70m (12'2")

Bedroom 1

3.70m (12'2") x 3.20m (10'6")

En-suite

1.50m (4'11") x 1.40m (4'7")

Bedroom 2

2.40m (7'11") x 1.60m (5'3")

Shower Room

2.40m (7'11") x 1.20m (3'11")

